

5206 LEGAL SUITE

554 SQ.FT
7'-2" CEILING HEIGHT

LOWER FLOOR

308 SQ.FT
7'-2" CEILING HEIGHT

■ 5206 Ross Street, Vancouver (suite)

| FLOOR | FINISHED | PATIO |
|-------|----------|-------|
| UPPER | — | — |
| MAIN | — | — |
| LOWER | 554 | 86 |

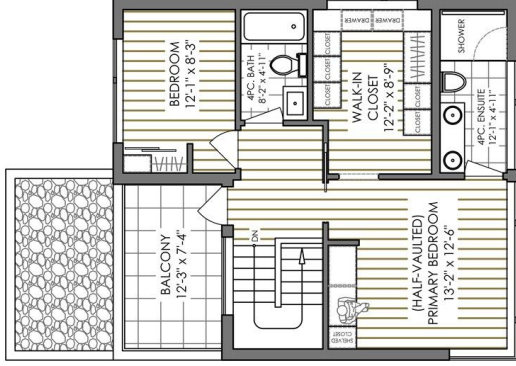
FINISHED: 554 SQ.FT



MAIN FLOOR

862 SQ.FT
8'-0" CEILING HEIGHT

TOTAL FINISHED: 2382 SQ.FT



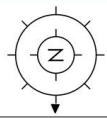
UPPER FLOOR

658 SQ.FT
8'-6" TO 11'-9" CEILING HEIGHT

■ 5208 Ross Street, Vancouver

| FLOOR | FINISHED | PATIO | BALCONY | PORCH | GARAGE/STUDIO |
|-------|----------|-------|---------|-------|---------------|
| UPPER | 658 | — | 90 | — | — |
| MAIN | 862 | 310 | 118 | 48 | 245 |
| LOWER | 308 | — | — | — | — |

FINISHED: 1828 SQ.FT



5208 & 5206 Ross Street, Vancouver

THE FLOOR PLAN IS NOT SUITABLE FOR CONSTRUCTION/ARCHITECTURAL PURPOSES. EVERY EFFORT HAS BEEN MADE TO REPRESENT ALL DIMENSION ACCURATELY. E&O INSURED.

