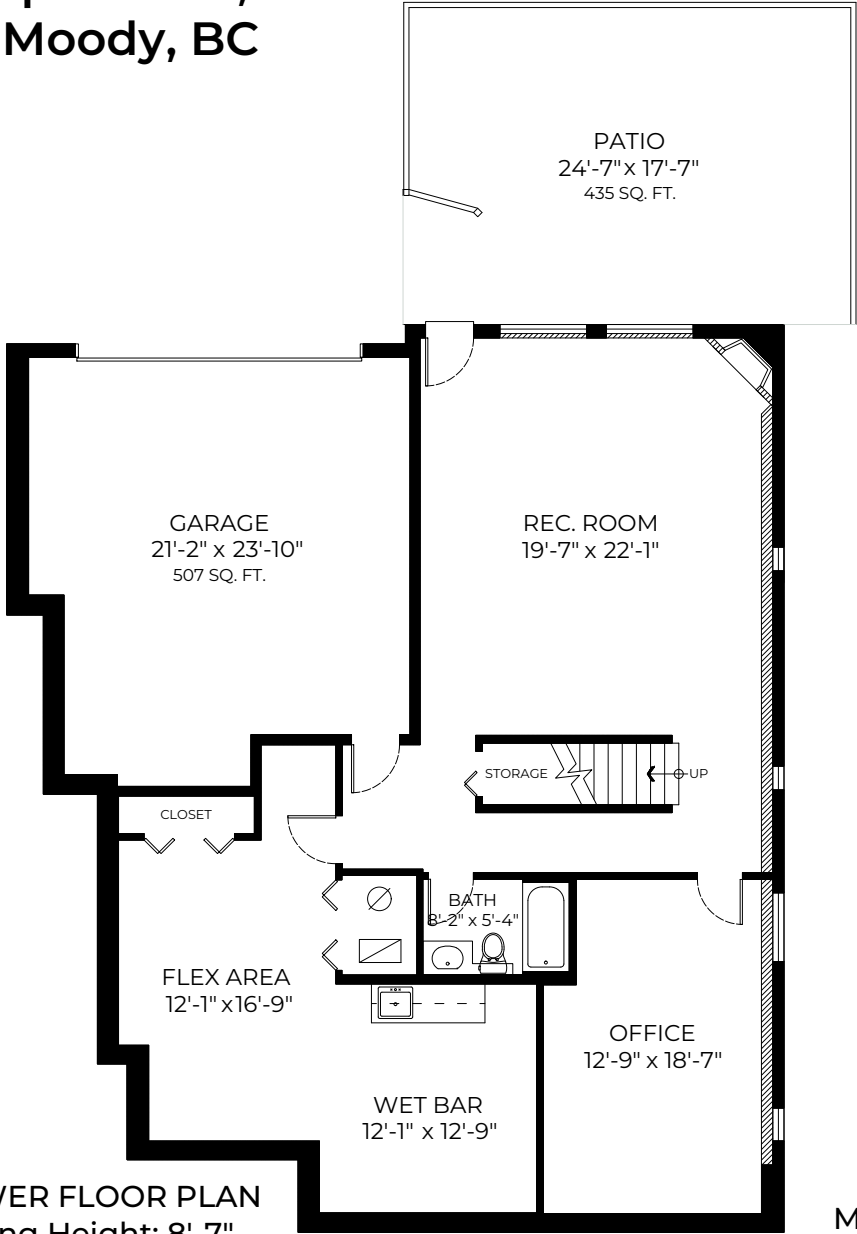


536 April Road,
Port Moody, BC

Main Floor: 1969 SQ. FT.
Lower Floor: 1451 SQ. FT.
Total: 3420 SQ. FT.

Balcony: 119 SQ. FT.
Garage: 507 SQ. FT.
Patio: 435 SQ. FT.

LOWER FLOOR PLAN
Ceiling Height: 8'-7"



MAIN FLOOR PLAN
Ceiling Height: 8'-11"

