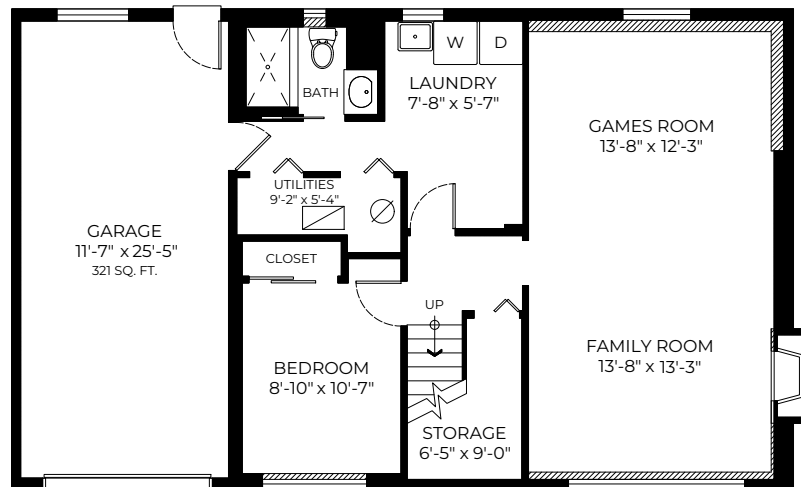


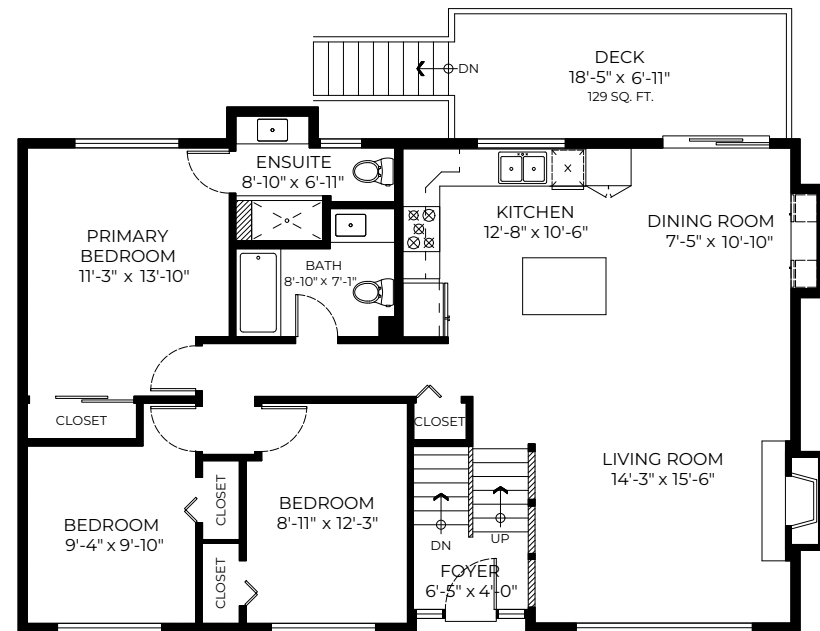
11567 196B Street, Pitt Meadows, BC

Main Floor: 1204 SQ. FT.
Lower Floor: 836 SQ. FT.
Total: 2040 SQ. FT.

Deck: 129 SQ. FT.
Garage: 321 SQ. FT.



LOWER FLOOR PLAN
Ceiling Height: 7'-8"



MAIN FLOOR PLAN
Ceiling Height: 8'-0"

