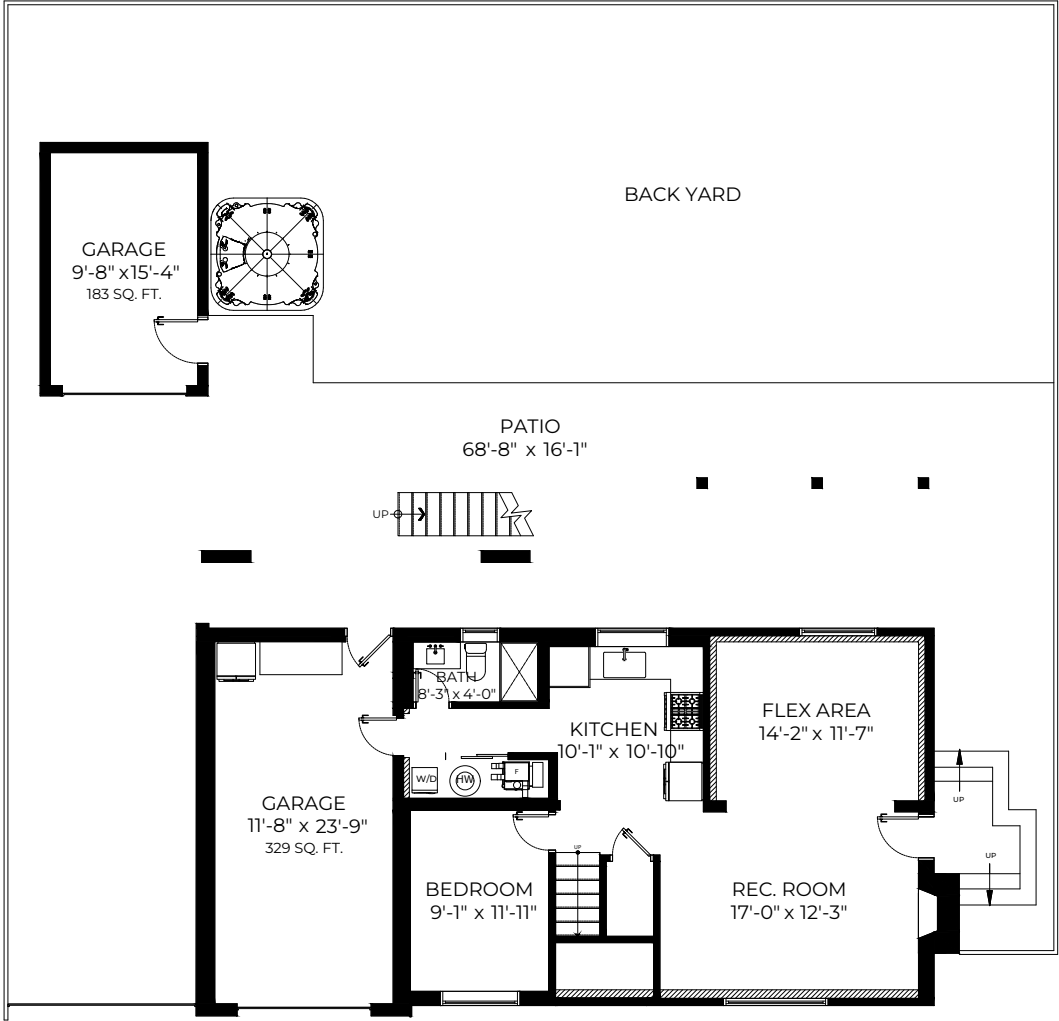


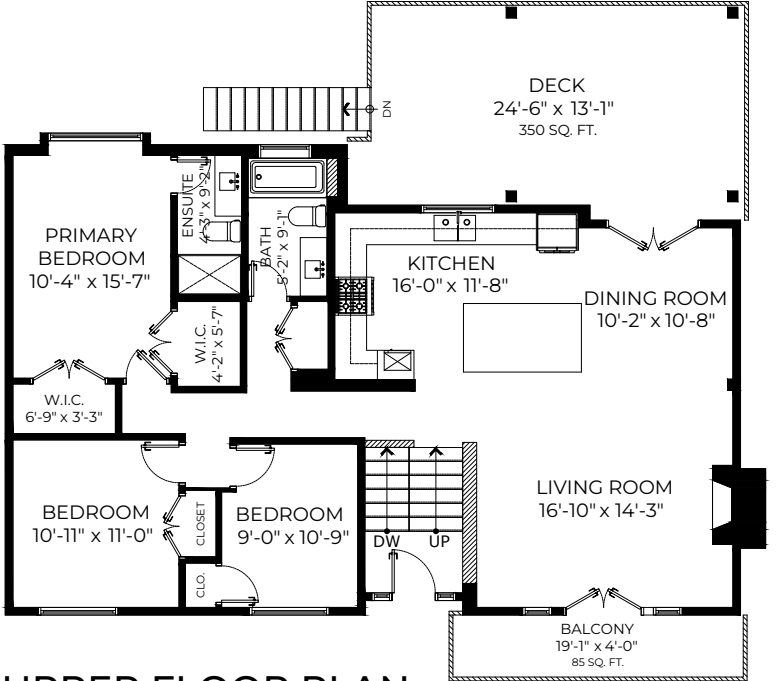
18940 Ford Road, Pitt Meadows, BC



MAIN FLOOR PLAN
Ceiling Height: 7'-11"

Upper Floor: 1377 SQ. FT.
Main Floor: 879 SQ. FT.
Total: 2256 SQ. FT.

Garage: 183 SQ. FT.
Garage: 329 SQ. FT.
Deck: 350 SQ. FT.
Balcony: 85 SQ. FT.



UPPER FLOOR PLAN
Ceiling Height: 8'-0"

