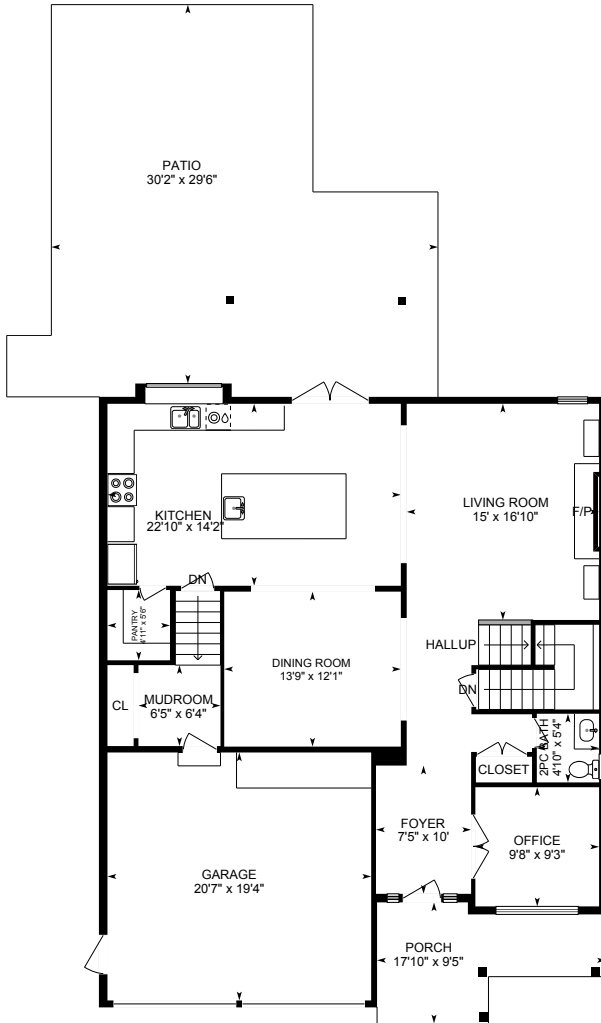


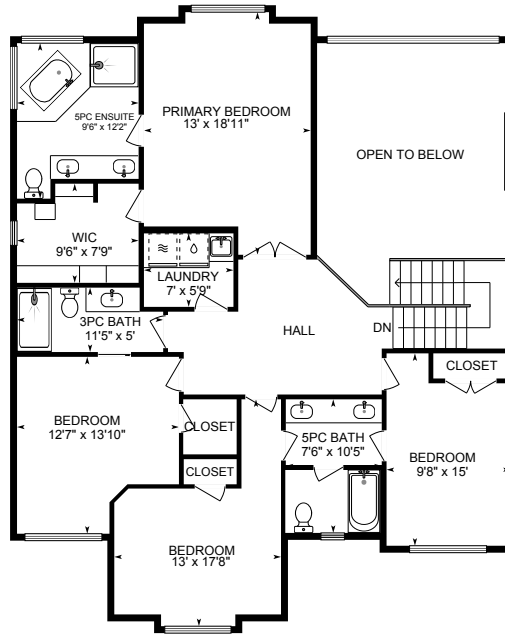
Maple Ridge, BC

Total:	4,047	sq ft
Main Floor	1,315	sq ft
Upper Floor	1,406	sq ft
Lower Floor	1,299	sq ft
Unfinished Utility	27	sq ft

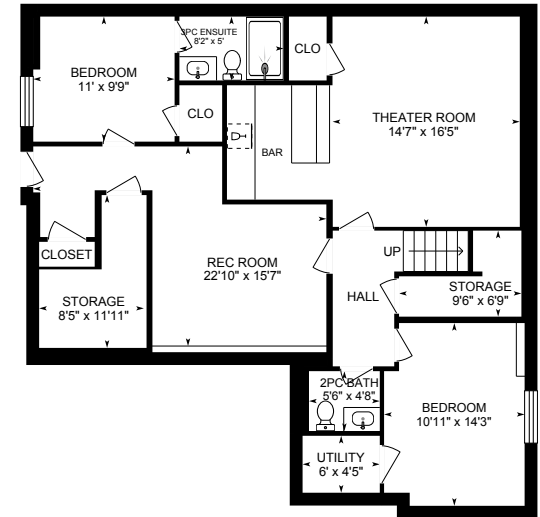
Total Extras:	1,311	sq ft
Porch	125	sq ft
Patio	788	sq ft
Garage	398	sq ft



Main Floor: 1315 sq ft



Upper Floor: 1406 sq ft



Lower Floor: 1299 sq ft
Unfinished: 27 sq ft



Total square foot calculated to gross unit area. SQFT based on interior measurements to exterior walls, not taken from original blueprints, may include unfinished area. This is for marketing purposes only and is not intended for architectural/construction use. All details, sizes & placements should be considered approximate within +/- 2% tolerance.

4 CORNERS



FLOOR PLAN