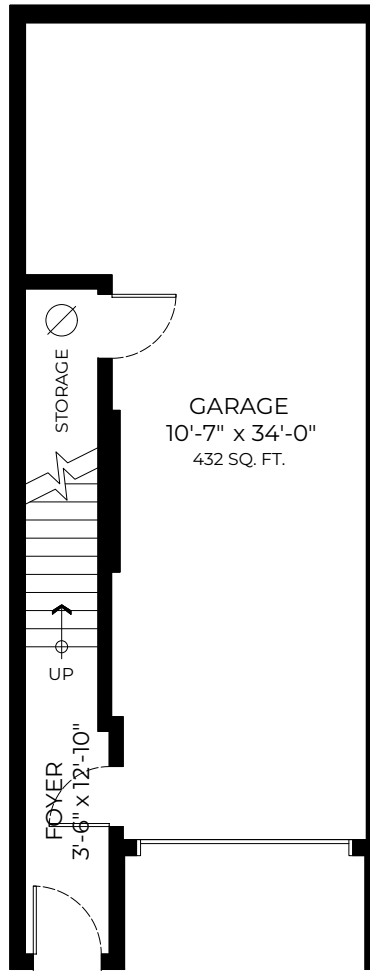


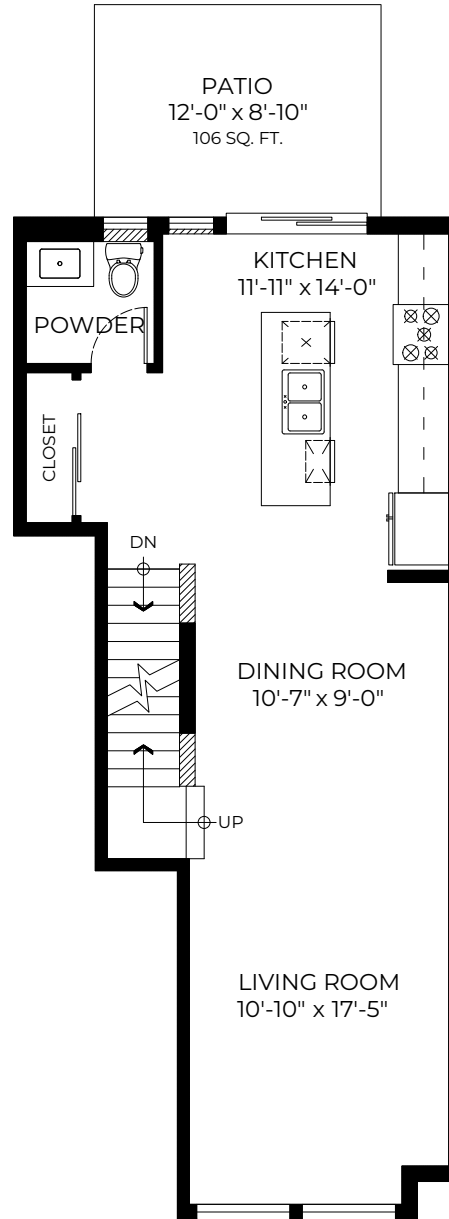
# #41-24108 104 Avenue, Maple Ridge, BC

Upper Floor: 629 SQ. FT.  
Main Floor: 629 SQ. FT.  
Lower Floor: 130 SQ. FT.  
**Total: 1388 SQ. FT.**

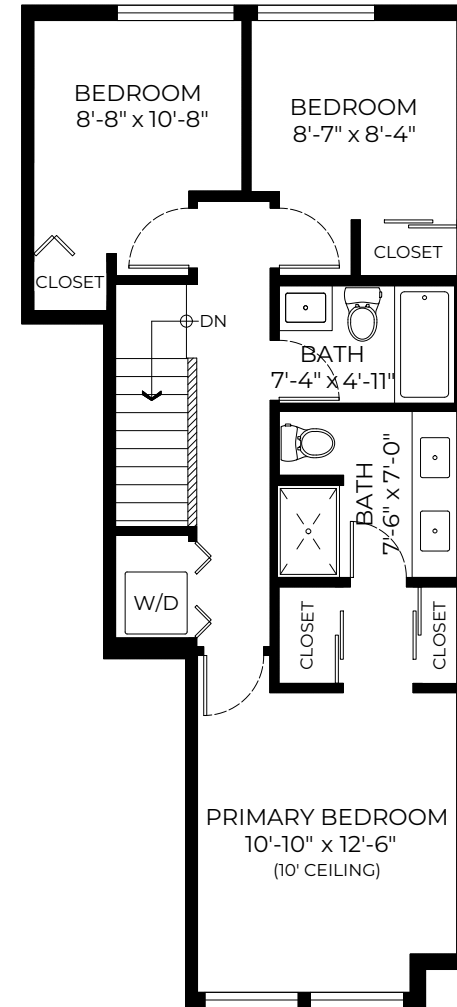
Patio: 106 SQ. FT.  
Garage: 432 SQ. FT.



**LOWER FLOOR PLAN**  
Ceiling Height: 9'-5"



**MAIN FLOOR PLAN**  
Ceiling Height: 9'-0"



**UPPER FLOOR PLAN**  
Ceiling Height: 8'-0"

