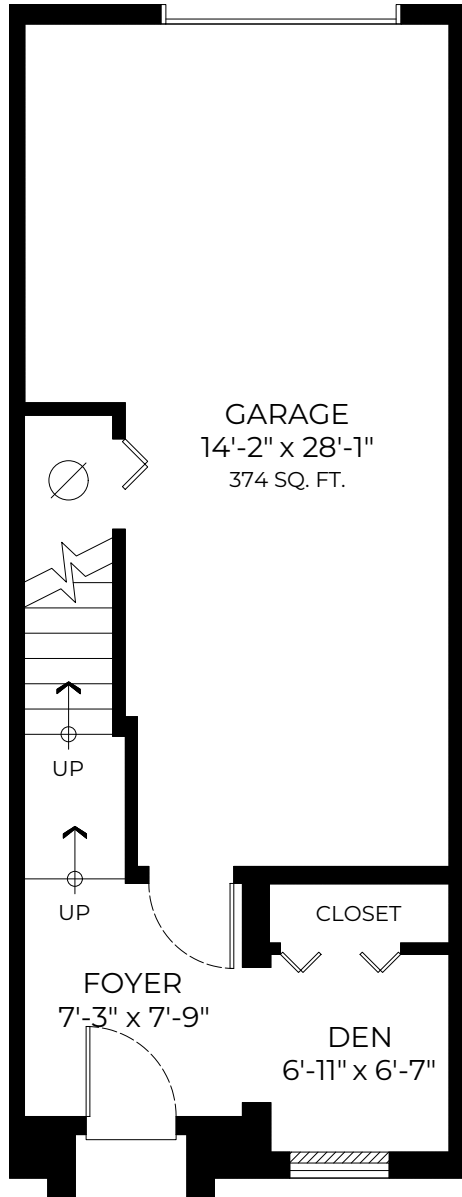


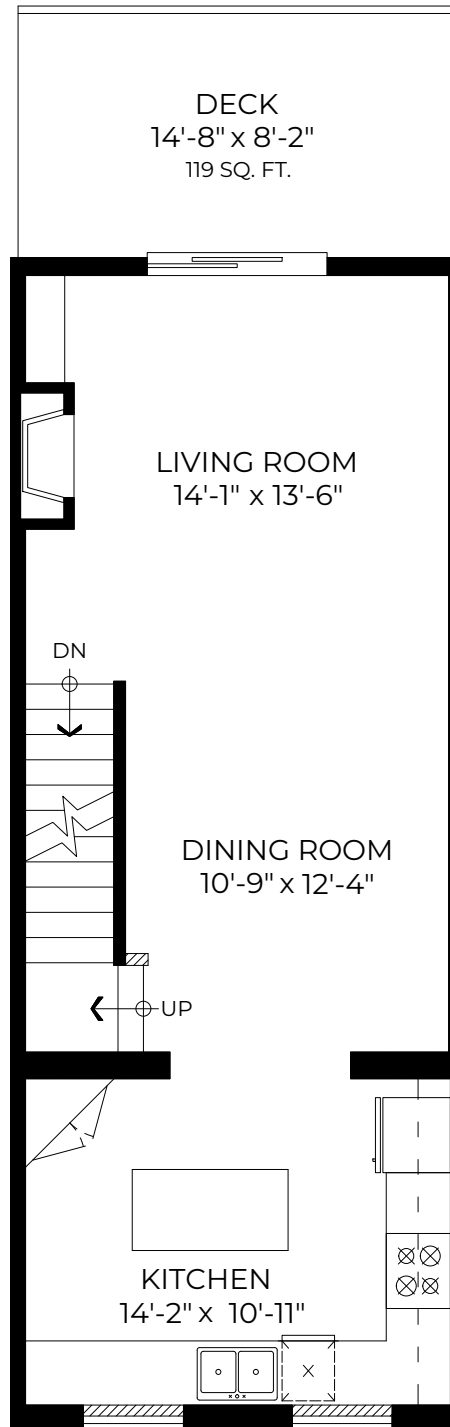
Upper Floor: 610 SQ. FT.  
 Main Floor: 593 SQ. FT.  
 Lower Floor: 214 SQ. FT.  
**Total: 1417 SQ. FT.**

Deck: 119 SQ. FT.  
 Garage: 374 SQ. FT.

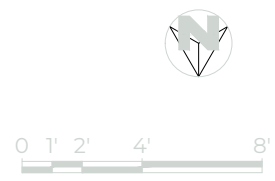
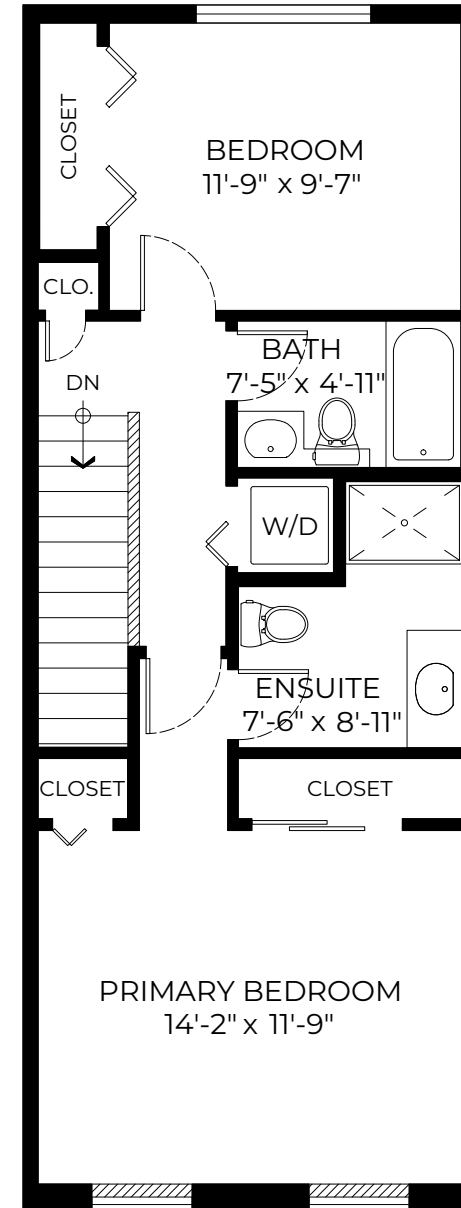
# #38-11067 Barnston View Road, Pitt Meadows, BC



**GROUND FLOOR PLAN**  
 Ceiling Height: 8'-0"



**MAIN FLOOR PLAN**  
 Ceiling Height: 8'-11"



**UPPER FLOOR PLAN**  
 Ceiling Height: 8'-0"