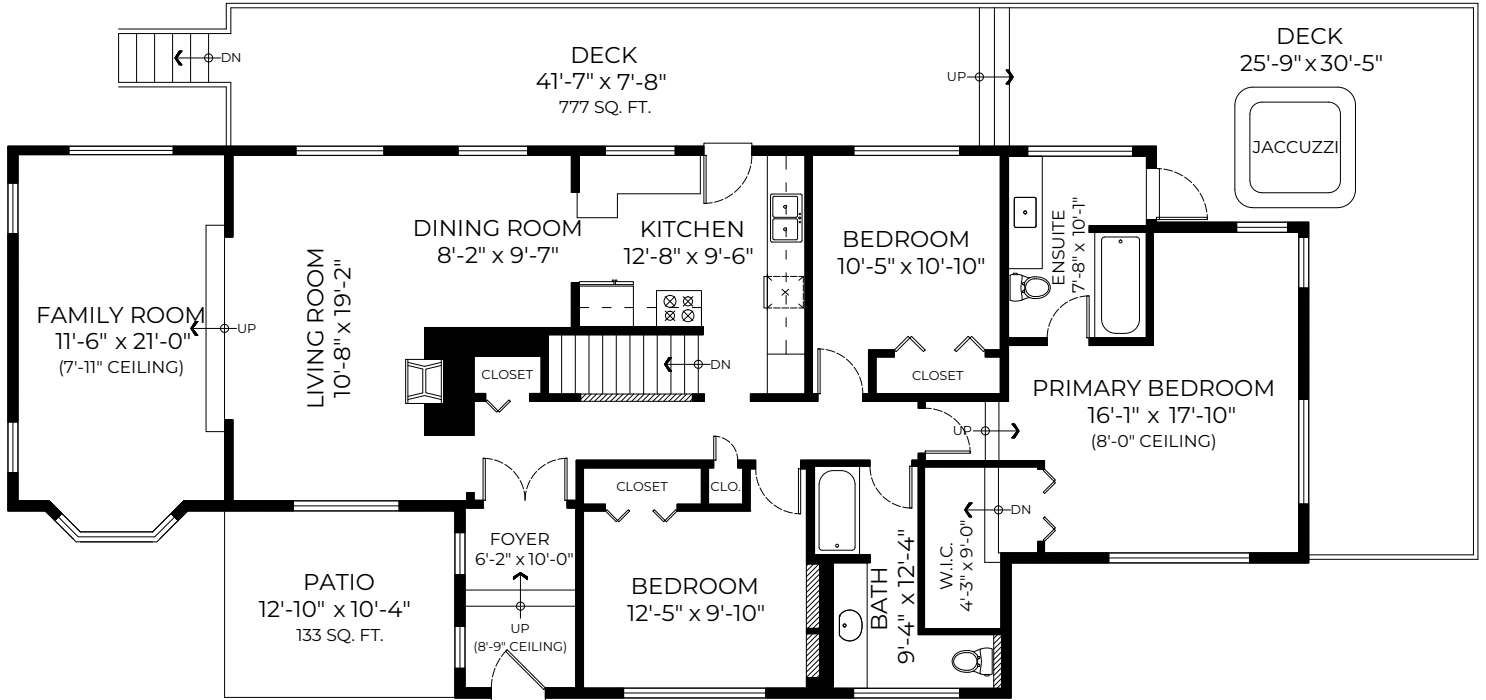


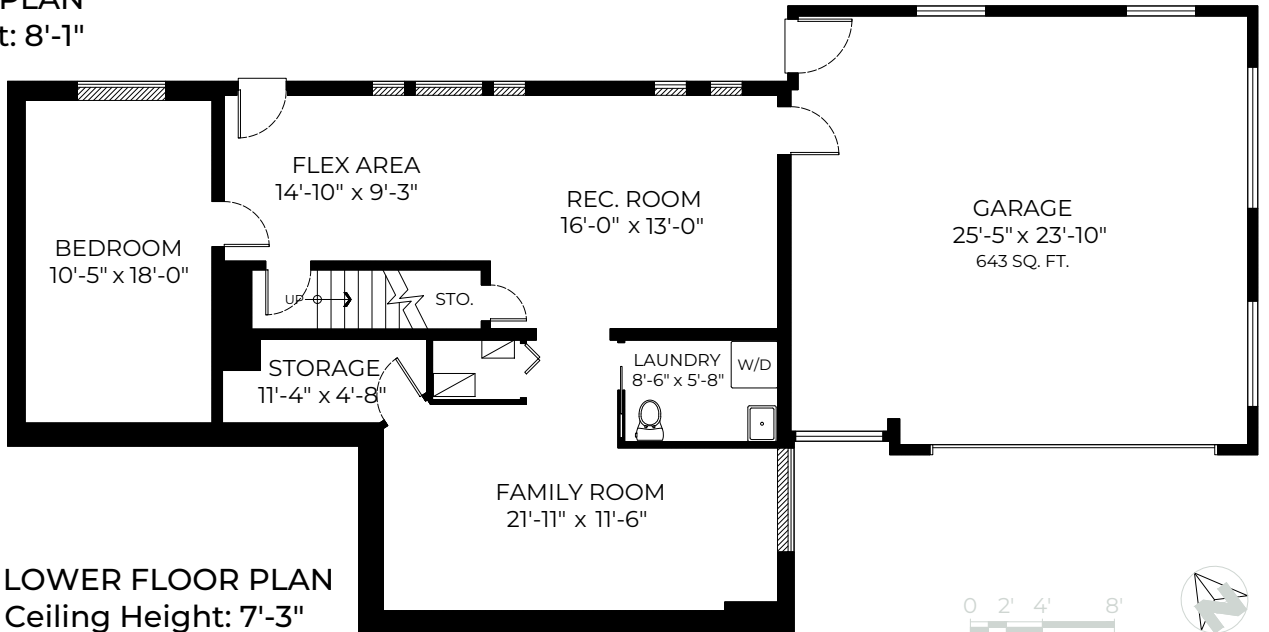
3051 Daybreak Avenue, Coquitlam, BC

Main Floor: 1808 SQ. FT.
 Lower Floor: 1133 SQ. FT.
Total: 2942 SQ. FT.

Deck: 777 SQ. FT.
 Patio: 133 SQ. FT.
 Garage: 643 SQ. FT.



MAIN FLOOR PLAN
 Ceiling Height: 8'-1"



LOWER FLOOR PLAN
 Ceiling Height: 7'-3"

