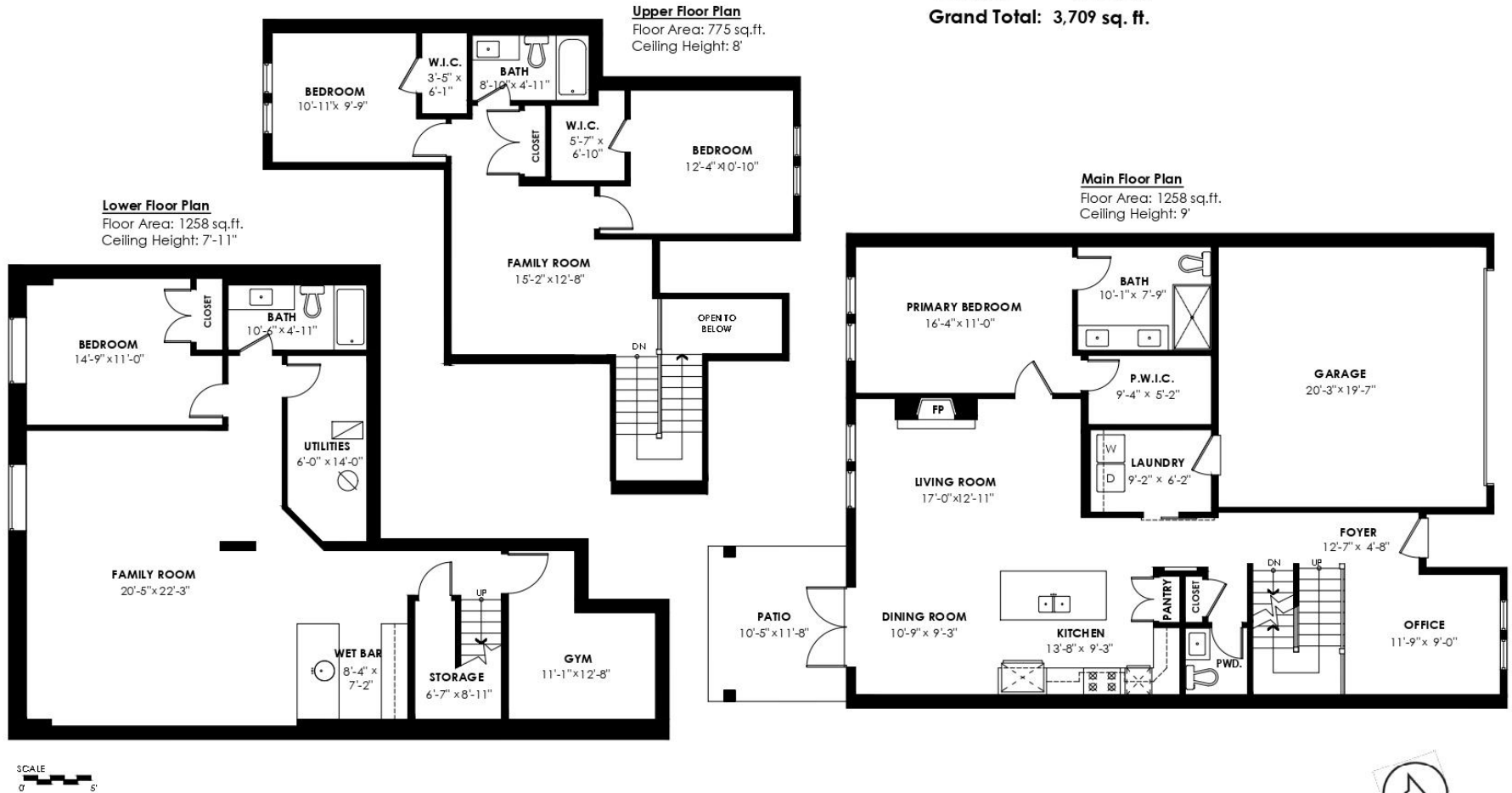


47-9235 McBride Street, Langley

Lower Floor: 1,258 sq. ft.
 Main Floor: 1,258 sq. ft.
 Upper Floor: 775 sq. ft.
Total Livable: 3,291 sq. ft.

Patio: 122 sq. ft.
Total Extras: 122 sq. ft.

Garage: 418 sq. ft.
Grand Total: 3,709 sq. ft.



cotala E&O Insured. For advertising purposes only. Not intended for architectural or construction use. Floorplan and measurements are approximate within +/- 2% tolerance.