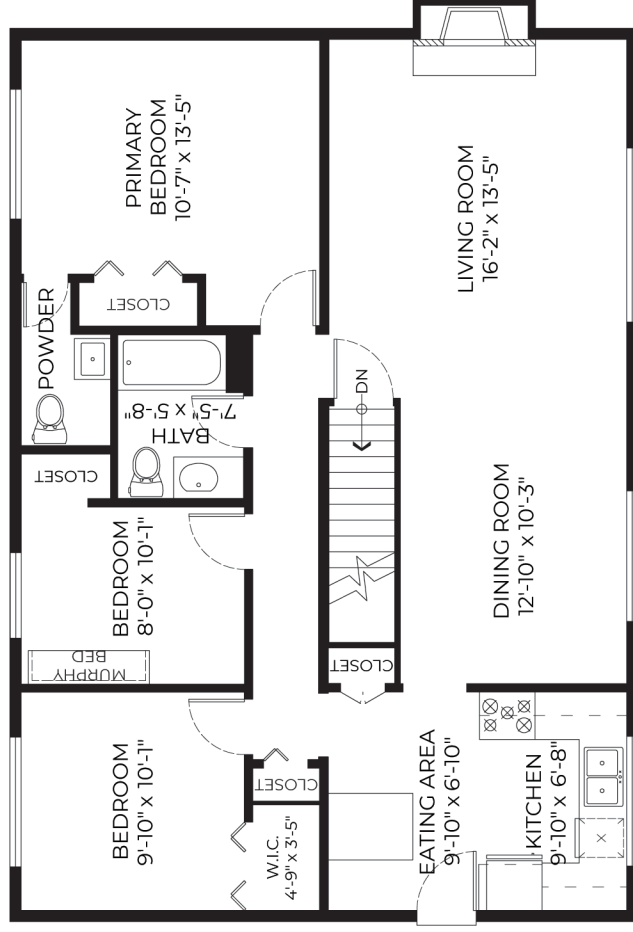


3824 Broom Place, Port Coquitlam, BC

Upper Floor: 1141 SQ. FT.
 Lower Floor: 817 SQ. FT.
Total: 1958 SQ. FT.

Patio: 276 SQ. FT.
 Garage: 228 SQ. FT.



LOWER FLOOR PLAN
 Ceiling Height: 8'-0"

UPPER FLOOR PLAN
 Ceiling Height: 8'-0"



*PERSONAL REAL ESTATE CORPORATION. MEASUREMENTS ARE APPROXIMATE AND MAY NOT BE TO SCALE.
 THE FLOOR PLAN ILLUSTRATION IS NOT SUITABLE FOR CONSTRUCTION/ARCHITECTURAL PURPOSES. E&O INSURED.