

# #106-2998 Robson Drive

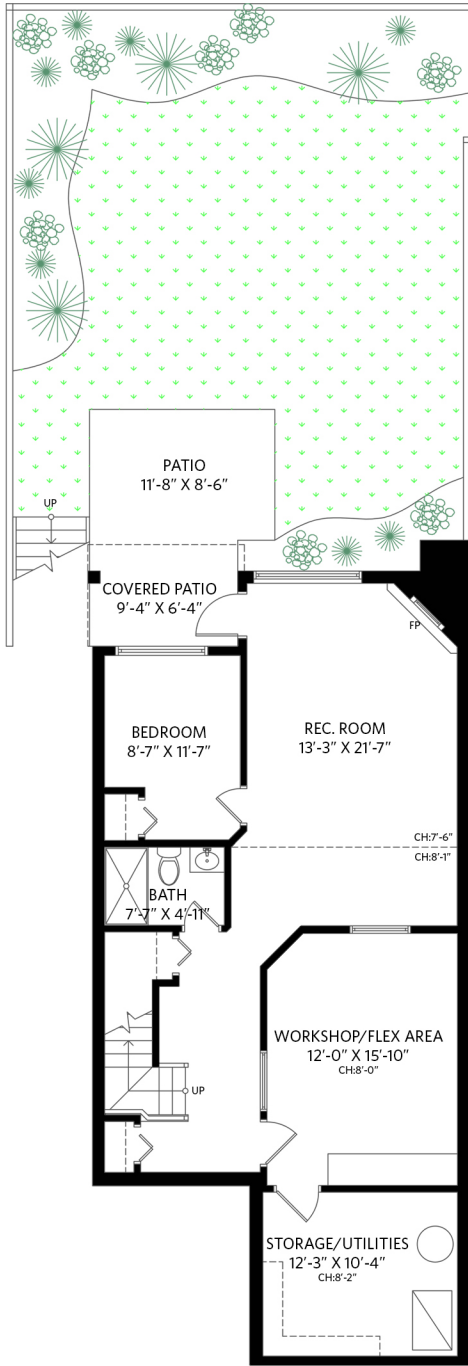
## Coquitlam, BC

4 bedrooms + den + 3 1/2 bathrooms

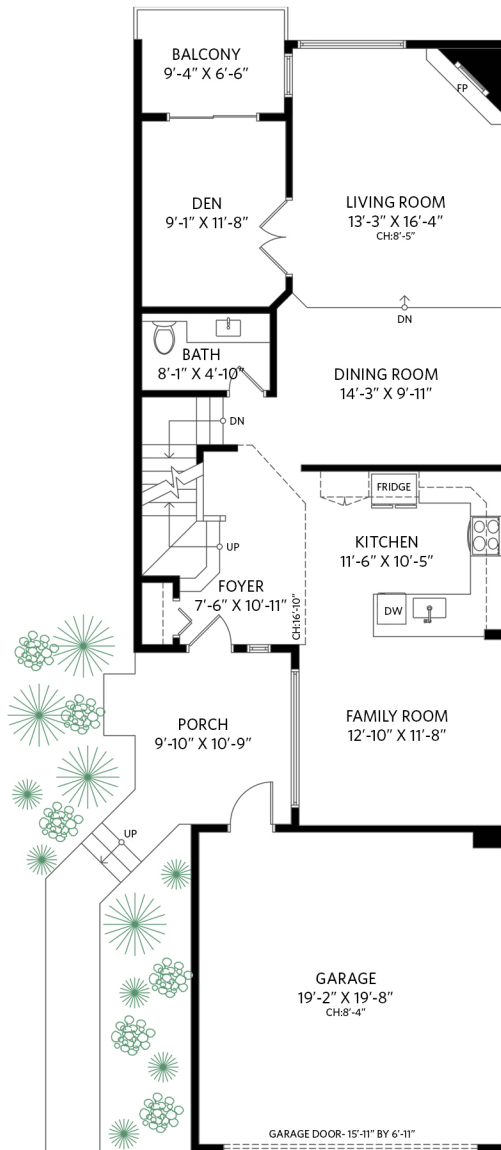
Lower Floor:	1,038 sq.ft.
Main Floor:	1,029 sq.ft.
Upper Floor:	1,134 sq.ft.
<b>Total Interior:</b>	<b>3,201 sq.ft.</b>

Attached Garage:	409 sq.ft.
Exterior Living:	339 sq.ft.

**Lower Floor - 1,038 sq.ft.**  
Ceiling height - 7' 6" to 8' 2"

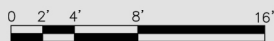
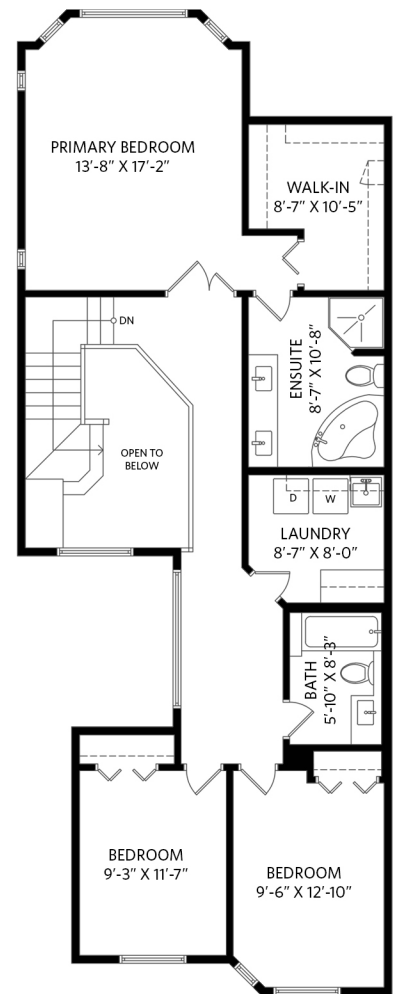


**Main Floor - 1,029 sq.ft.**  
Ceiling height - 8' 0" to 16' 10"



**ENTRANCE**

**Upper Floor - 1,134 sq.ft.**  
Ceiling height - 8' 0"



Floor plan measurements, dimensions, square footage, existing structures & features are approximations and for illustrative purposes only. E&O insured for \$1,000,000