



RUSS MACNAB

SPECIAL AGENT

Russ@theMacnabs.com

604.763.8196



DUKE GRIMBEEK

SPECIAL AGENT

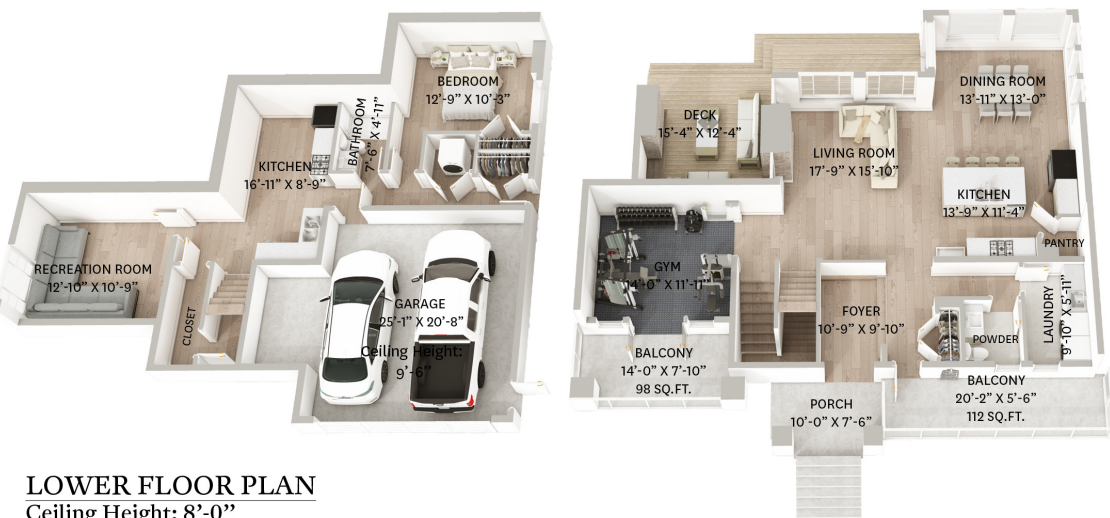
Duke@theMacnabs.com

604.761.7324

THE MACNABS

23816 110 AVENUE, MAPLE RIDGE, BC

LOWER FLOOR TOTAL: 859 SQ.FT. GARAGE: 482 SQ. FT.
MAIN FLOOR TOTAL: 1,255 SQ.FT. BALCONY: 289 SQ. FT.
UPPER FLOOR TOTAL: 1,166 SQ.FT. DECK: 267 SQ. FT.
TOTAL: 3,280 SQ.FT. PORCH: 68 SQ. FT.



LOWER FLOOR PLAN
Ceiling Height: 8'-0"



MAIN FLOOR PLAN
Ceiling Height: 10'-0"



UPPER FLOOR PLAN
Ceiling Height: 8'-0"



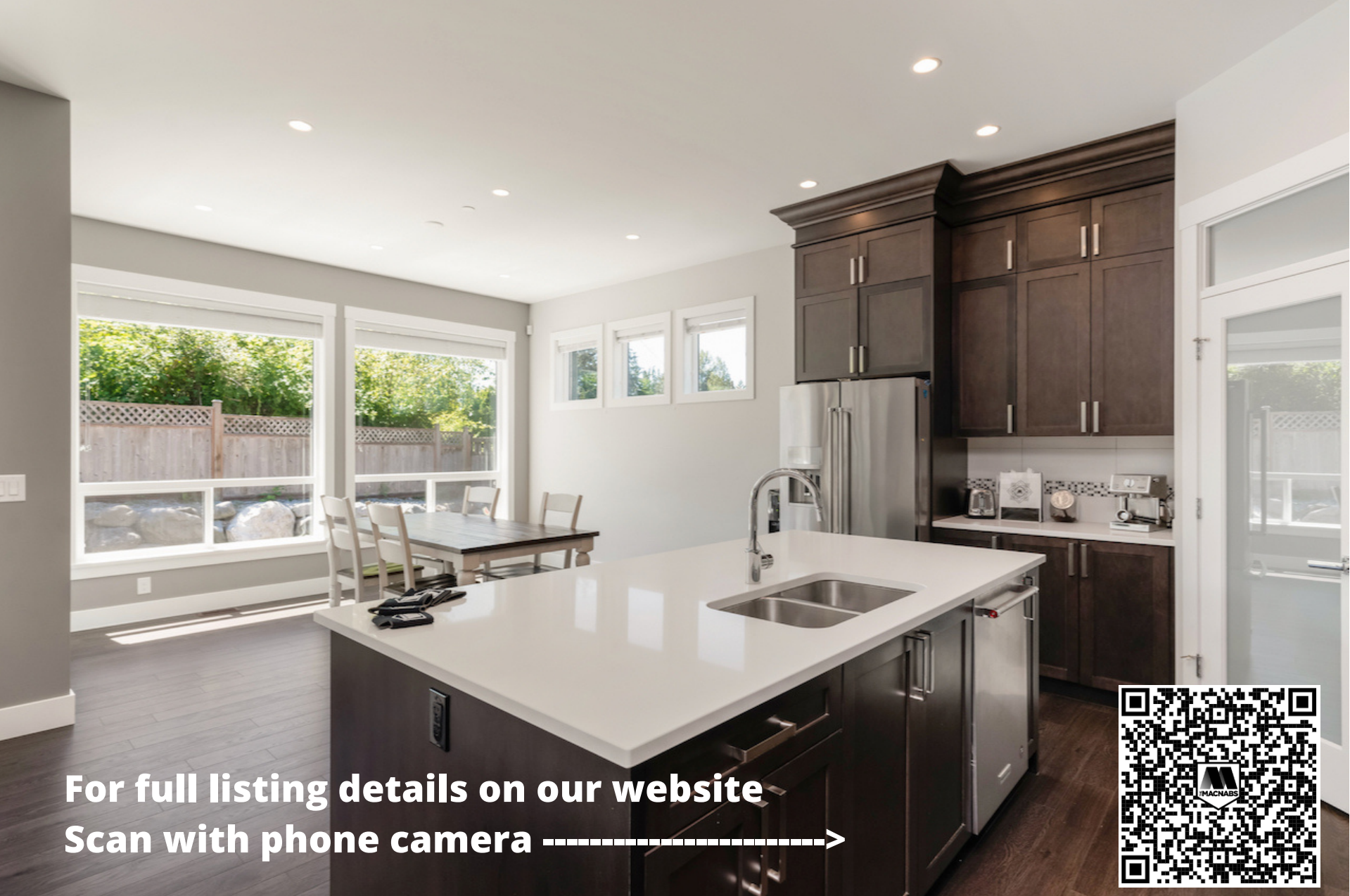
SOCIALIZE WITH US

- @THEMACNABS
- THEMACNABTEAM
- @THEMACNABS

WWW.THEMACNABS.COM

23816 110 Ave
Maple Ridge, BC
\$1,599,900





For full listing details on our website
Scan with phone camera ----->



Address	23816 110 Ave
Property Type	Residential Detached
Type of Dwelling	House/Single Family
Style of Home	2 Storey w/ Bsmt.
List Price	\$1,599,900
Area	Maple Ridge
Sub Area	Cottonwood
MLS #	R2709310
Listing Brokerage	Keller Williams Elite Realty
Sq/Ft	3,304 SQ/FT
Bedrooms	4
Bathrooms	4
Exposure	South
Year Built	2016
Lot Size	5535 SQ/FT
Postal Code	V2W 1Z8
Tax Amount	\$6,620
Tax Year	2021
Site Influences	Central Location Private Setting Private Yard
Features	1 bed suite Air Conditioning Greenbelt