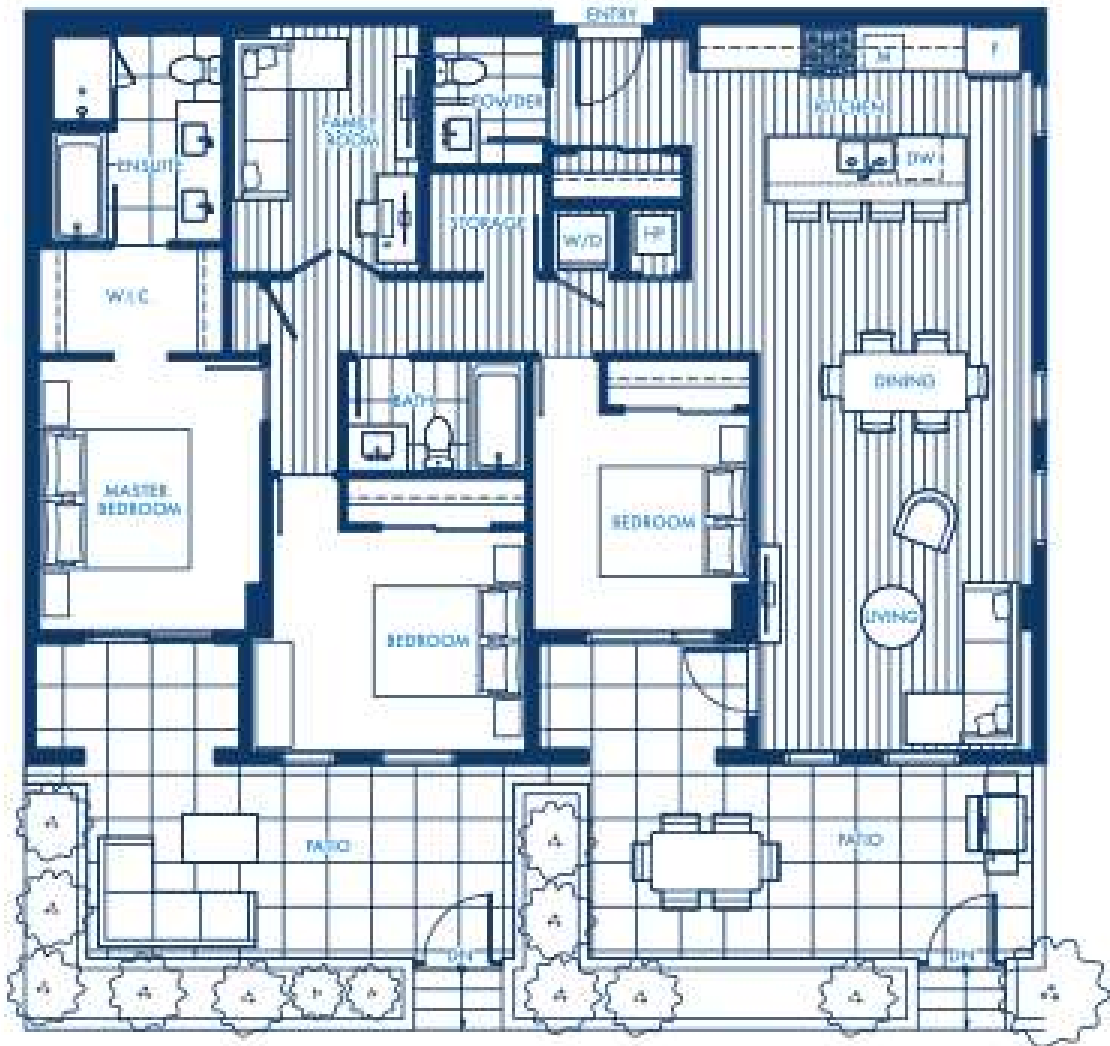


South Building  
**Plan D**

3 Bed + 2.5 Bath + Family Room  
Interior: 1465 Sq Ft  
Exterior: 465 Sq Ft  
Total: 1930 Sq Ft



LEVEL 1

## WELCOME TO THE NEW ERA

- Located in charming downtown Maple Ridge on Dewdney Trunk Road spanning three city blocks
- Doorstep access to a amenity-rich urban town centre with shops, services and restaurants
- Easy access to transit and the West Coast Express makes traveling to Downtown Vancouver and other communities a breeze
- Surrounded by trails, the Fraser River and an abundance of green space with spectacular views of the Coast Mountains

## STATEMENT LIVING

- Beautiful homes designed for the next generation by Iredale Architecture
- Homes are optimized for a picturesque view of Maple Ridge's natural beauty
- Large outdoor balconies and/or terraces expand your living space
- Stylish and timeless homes with expansive windows that maximize natural light and sweeping views
- Individually controlled air-conditioning and heating for year-round climate control throughout the home
- Energy efficient heat recovery ventilators for continuous air filtered suite ventilation and bathroom exhaust
- 9' ceilings in the main living areas
- 10' ceilings in select ground floor units

## THOUGHTFUL DESIGN

- Timeless interiors designed by Megan Bennett Design
- Choice of two designer colour palettes: Dark or Light
- Wide-plank engineered hardwood flooring in the entry, kitchen, living and dining areas
- Faux wood blinds on all windows
- Lush carpet in all bedrooms
- Energy efficient front-loading Whirlpool washer and dryer

## STYLISH KITCHENS

- Italian inspired cabinetry with under-cabinet LED lighting and soft-close drawers
- Stylish matte black cabinet pulls
- Durable easy-to-clean quartz countertops
- Modern subway tile backsplash
- Stainless-steel appliance package featuring:
  - KitchenAid 30" fridge with bottom freezer
  - KitchenAid 30" 5-burner gas range with self-cleaning oven
  - KitchenAid 24" dishwasher
  - Panasonic microwave
  - Stainless-steel hood fan with built-in LED light
- Large kitchen islands
- Double-bowl, under mounted stainless steel sink
- Kohler matte black faucet with pull-out spray

## RELAXING BATHROOMS

- Durable easy-to-clean quartz countertops
- Modern wood grain laminate cabinets with soft-close hardware
- Contemporary large format matte porcelain floor tiles
- Ensuite or main bathrooms feature unique accent stripes on bath walls and floors
- 2nd bathrooms feature modern grey patterned tiles for floors and white ceramic tiles for walls
- Relaxing soaker-style bathtub in main bathroom
- Matte black Kohler faucets and accessories throughout
- High efficiency soft-close toilet

## AMENITIES

- Spacious 6th floor rooftop amenity on the North building provides a place to gather and socialize in the open air
- A roof garden and outdoor lounge on the South building perfect for hosting the ultimate party
- Party room with kitchen, dining and couches for entertaining guests

- Fully-equipped fitness centre for a healthy lifestyle
- A beautifully landscaped outdoor courtyard with greenways
- Outdoor social seating with dining areas
- Large outdoor children's play area

## PEACE OF MIND

- Secure residential underground parking
- Security camera system in underground parkade and elevators
- Interphone at lobby and parkade entrances with a secure FOB access control system combined with bluetooth capability
- Wireless security system on all ground floor homes
- Thermally efficient building insulation, HVAC, and lighting systems meet all energy code requirements
- Hardwired interconnected smoke alarms with 10 year battery backup located in all homes
- Secure bike storage room
- Convenient recycling and garbage disposal room
- Fully sprinklered, fire-protected building
- Smoke detectors throughout common areas and are hardwired to a Building Fire Alarm System with off site monitoring
- Comprehensive 2/5/10 Travelers Home Warranty:
  - 2 year materials and workmanship protection
  - 5 year building envelope protection
  - 10 year structural protection

## UPGRADE OPTIONS

- Engineered hardwood flooring in all bedrooms
- Custom closet shelving
- Custom pantry millwork