

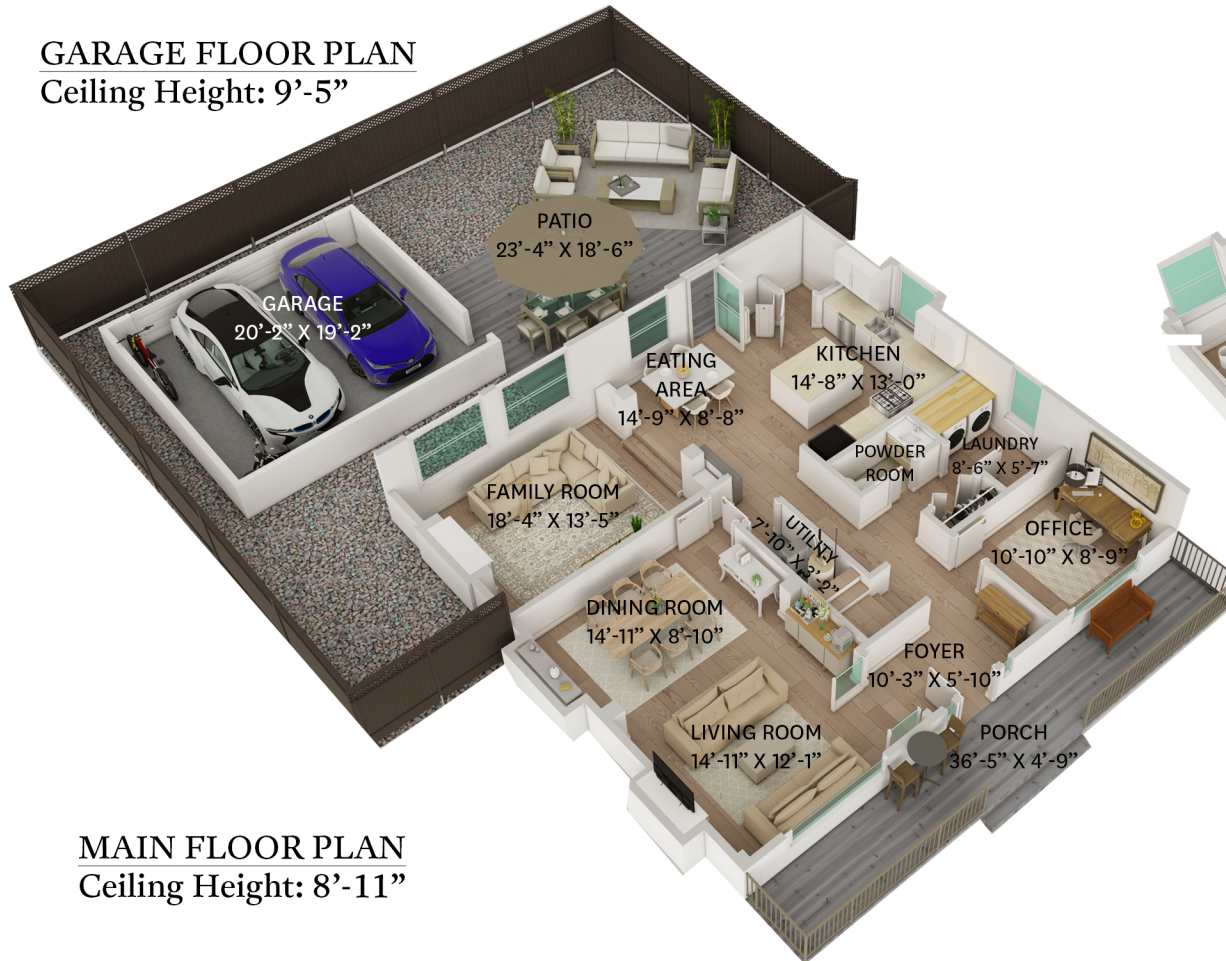
2642 LURIO CRESCENT, PORT COQUITLAM, BC

MAIN FLOOR TOTAL: 1,366 SQ. FT.
UPPER FLOOR TOTAL: 1,350 SQ. FT.
TOTAL: 2,716 SQ. FT.

GARAGE: 429 SQ. FT.
PATIO: 432 SQ. FT.
PORCH: 172 SQ. FT.

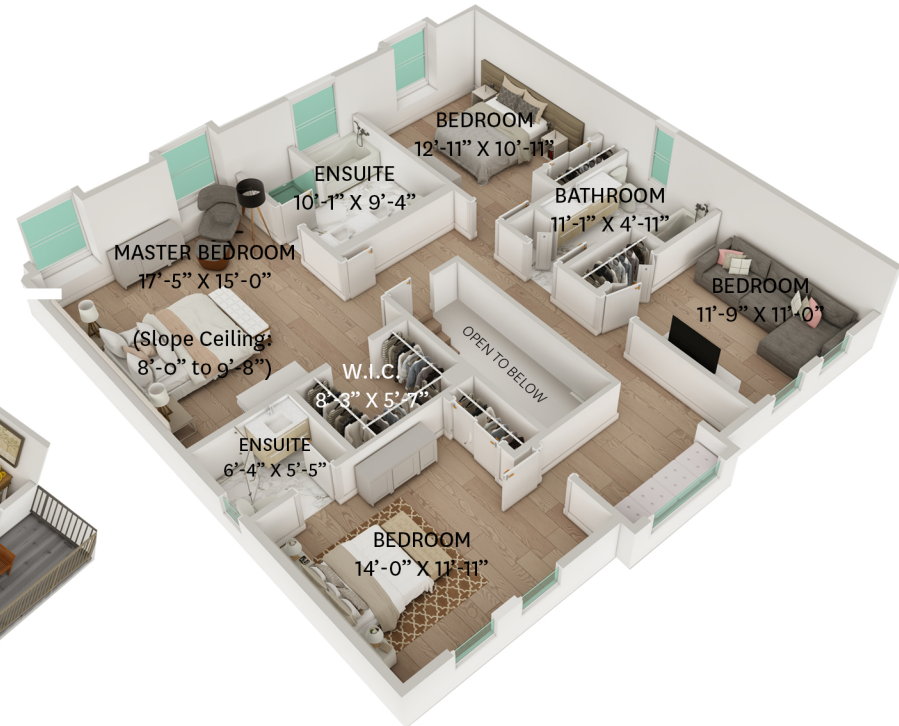
GARAGE FLOOR PLAN

Ceiling Height: 9'-5"



MAIN FLOOR PLAN

Ceiling Height: 8'-11"



UPPER FLOOR PLAN

Ceiling Height: 8'-0"

Slope Ceiling: 8'-0" to 9'-8"
(Master Bedroom)



Jordan Macnab PREC*
604-551-5695
jordan@themacnabs.com

*PERSONAL REAL ESTATE CORPORATION. THE FLOOR PLAN ILLUSTRATION IS NOT SUITABLE FOR CONSTRUCTION/ ARCHITECTURAL PURPOSES.
MEASUREMENTS ARE APPROXIMATE AND MAY NOT BE TO SCALE. E&O INSURED.

floor plan designed by
ishot.ca Enterprises Inc.
604-368-7979
http://ishot.ca