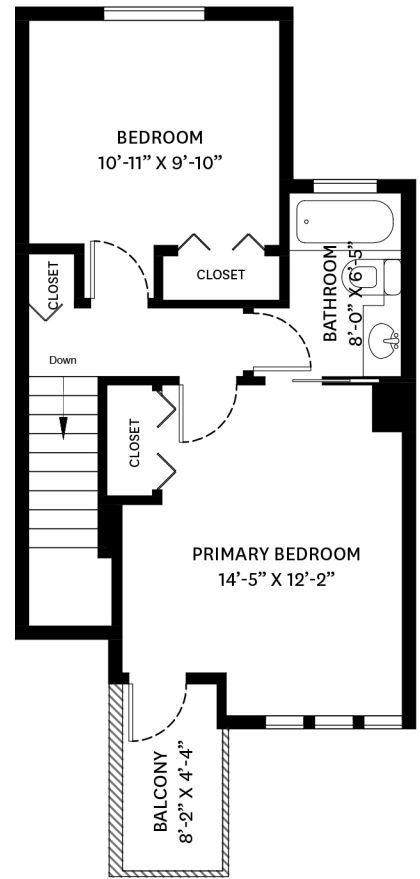
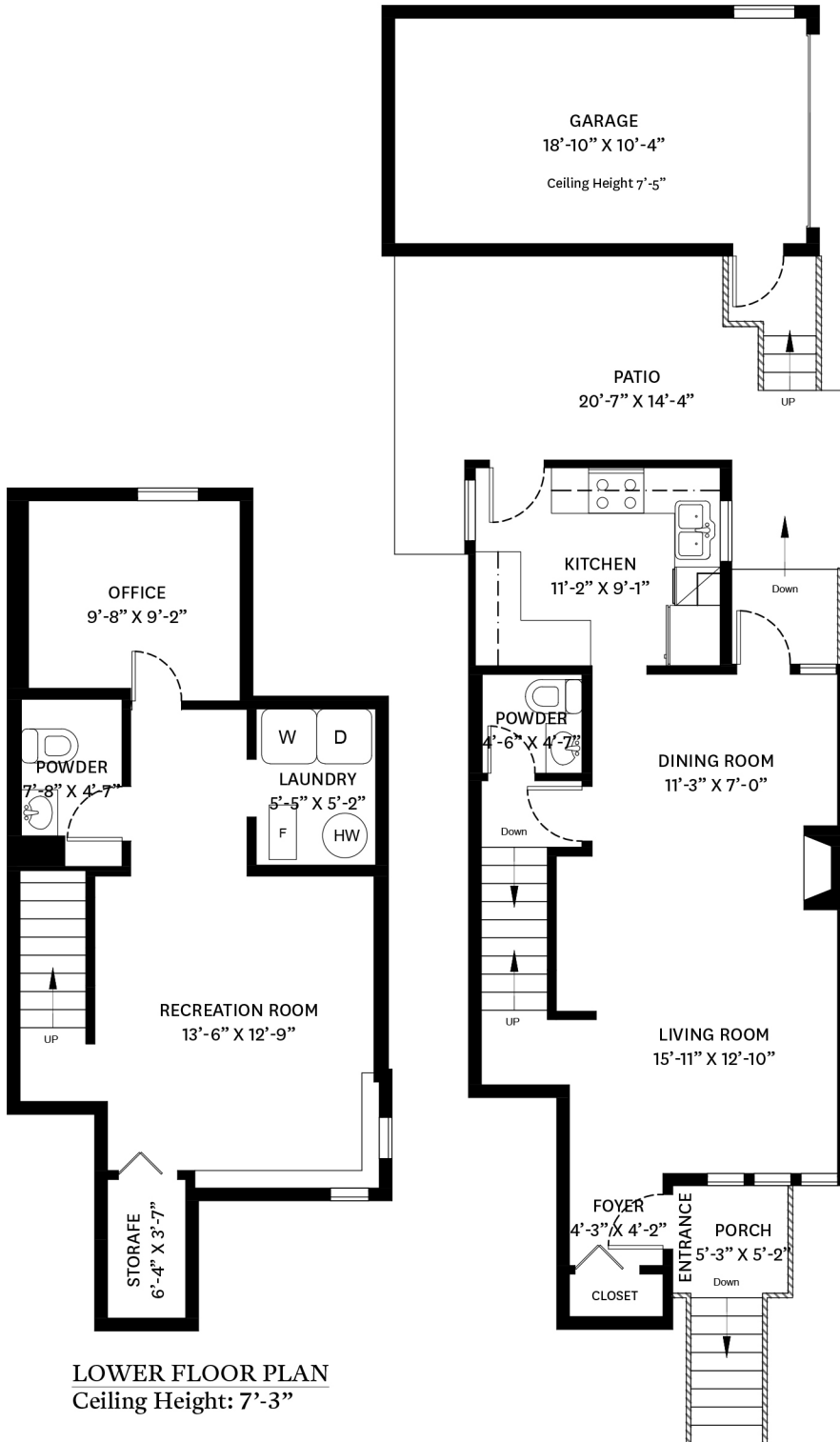


2-1203 CARTIER AVENUE, COQUITLAM, BC

LOWER FLOOR TOTAL: 493 SQ.FT.
 MAIN FLOOR TOTAL: 541 SQ.FT.
 UPPER FLOOR TOTAL: 474 SQ.FT.
TOTAL: 1,508 SQ.FT.

GARAGE: 228 SQ.FT.
PATIO: 245 SQ.FT.
BALCONY: 35 SQ.FT.
PORCH: 27 SQ.FT.



LOWER FLOOR PLAN
 Ceiling Height: 7'-3"

MAIN FLOOR PLAN
 Ceiling Height: 8'-0"

UPPER FLOOR PLAN
 Ceiling Height: 8'-0"

