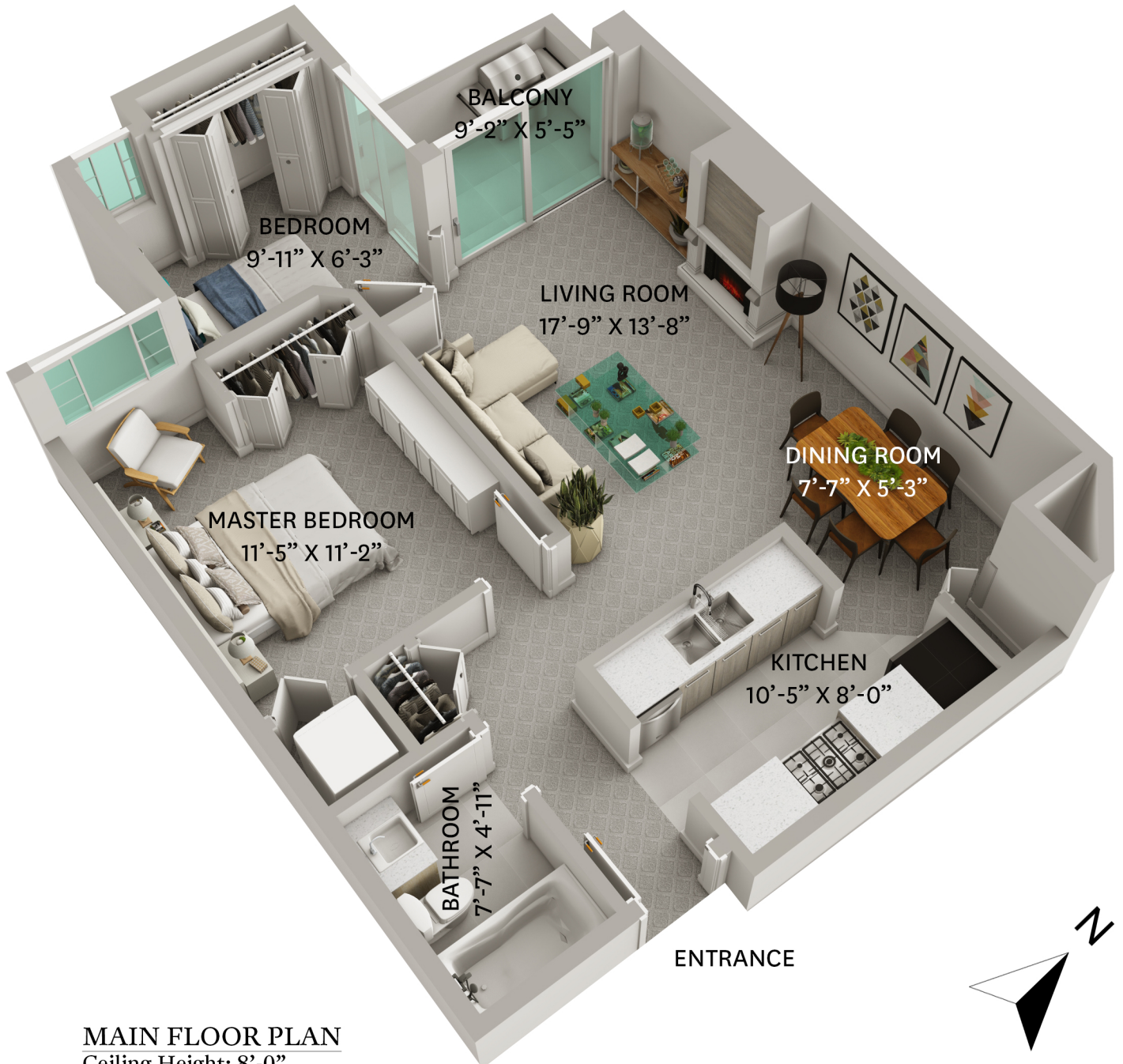


# 411 - 2915 GLEN DRIVE, COQUITLAM, BC

MAIN FLOOR TOTAL: 810 SQ. FT.  
BALCONY: 50 SQ. FT.



**Jordan Macnab** PREC\*  
604-551-5695  
jordan@themacnabs.com

floor plan designed by  
ishot.ca Enterprises Inc.  
604-368-7979  
<http://ishot.ca>

\*PERSONAL REAL ESTATE CORPORATION. THE FLOOR PLAN ILLUSTRATION IS NOT SUITABLE FOR CONSTRUCTION/ ARCHITECTURAL PURPOSES.  
MEASUREMENTS ARE APPROXIMATE AND MAY NOT BE TO SCALE. E&O INSURED.