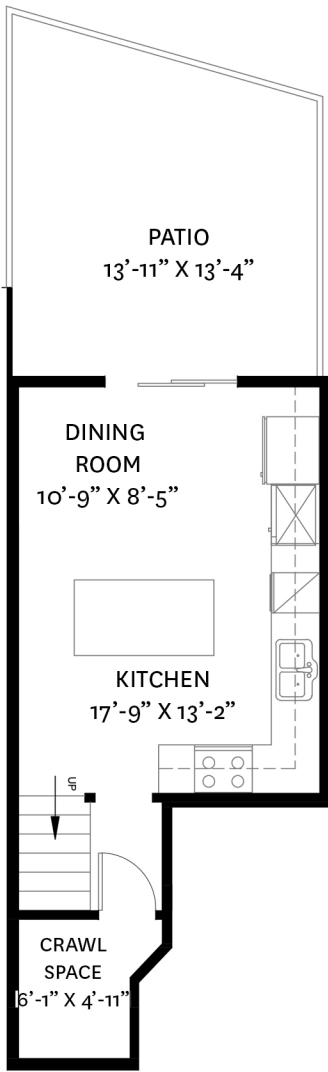


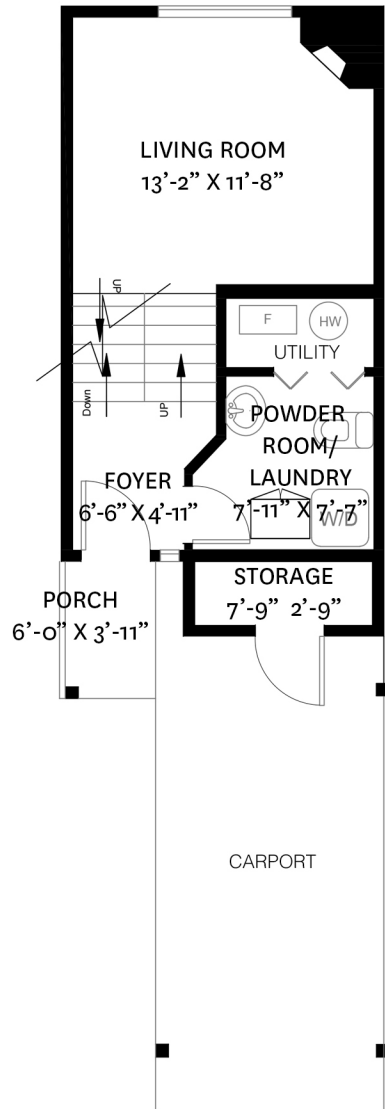
# 233 BALMORAL PLACE, PORT MOODY, BC

LOWER FLOOR TOTAL: 298 SQ. FT.  
 MAIN FLOOR TOTAL: 373 SQ. FT.  
 UPPER FLOOR TOTAL: 428 SQ. FT.  
 TOP FLOOR TOTAL: 280 SQ. FT.  
**TOTAL: 1,379 SQ. FT.**

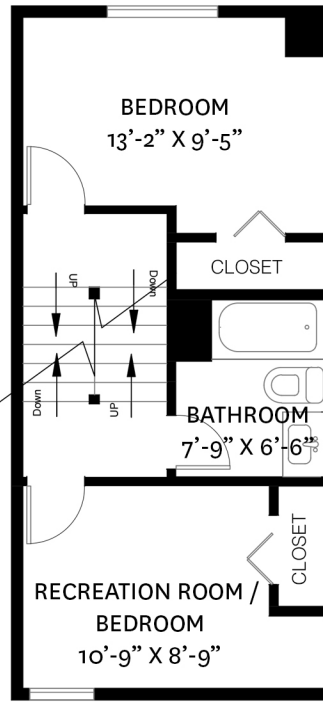
PATIO: 186 SQ. FT.  
 PORCH: 24 SQ. FT.  
 CRAWL SPACE: 44 SQ. FT.



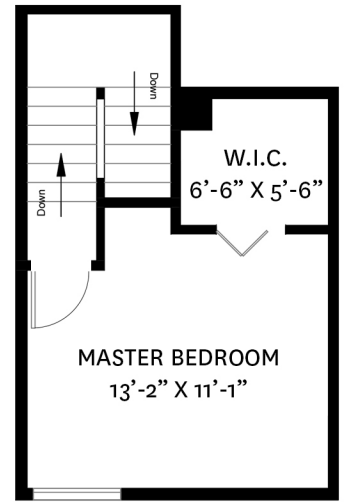
**LOWER FLOOR PLAN**  
 Ceiling Height: 8'-0"



**MAIN FLOOR PLAN**  
 Ceiling Height: 8'-0"



**UPPER FLOOR PLAN**  
 Ceiling Height: 8'-0"



**TOP FLOOR PLAN**  
 Ceiling Height: 8'-0"

