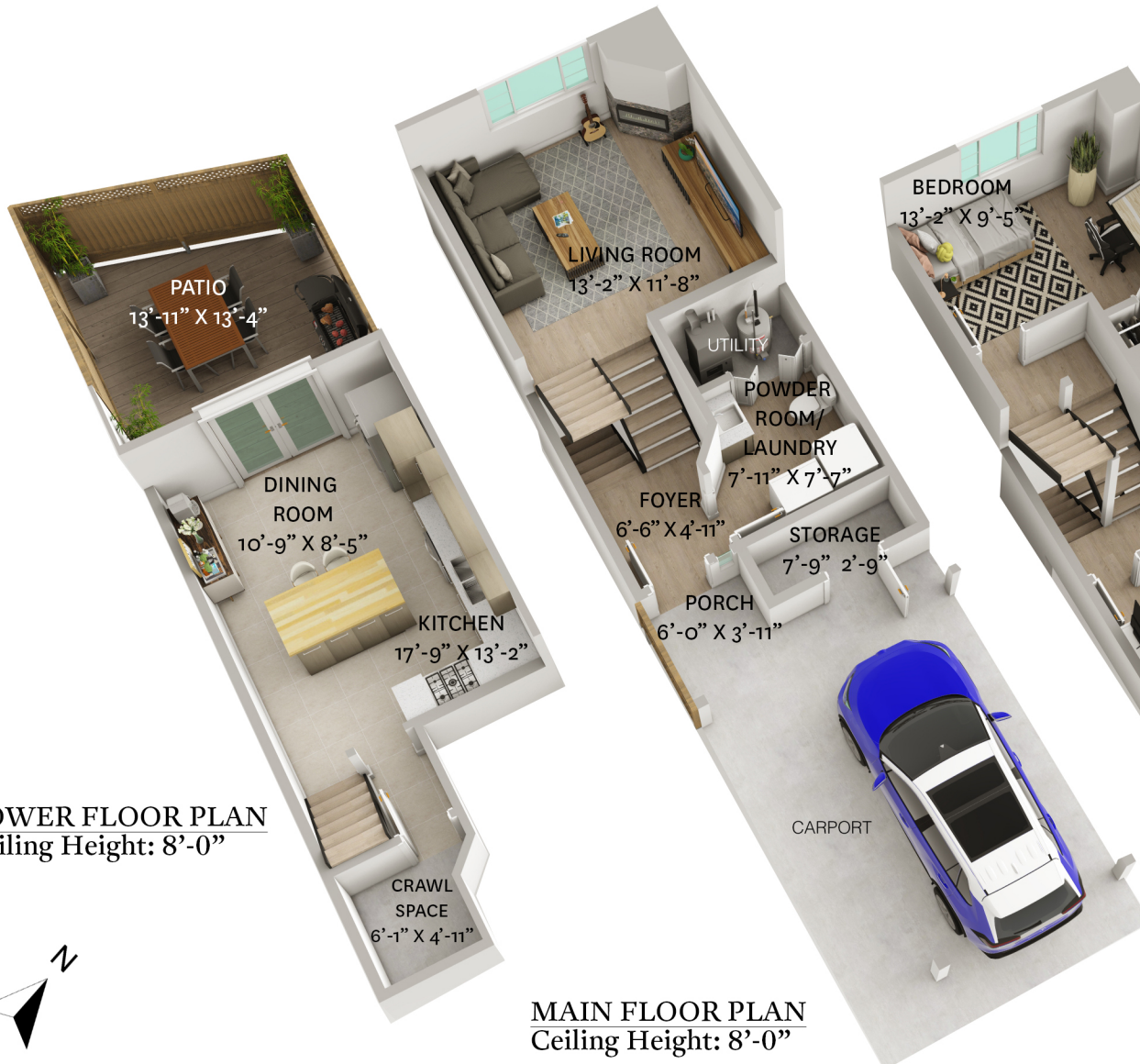


233 BALMORAL PLACE, PORT MOODY, BC



LOWER FLOOR PLAN
Ceiling Height: 8'-0"

MAIN FLOOR PLAN
Ceiling Height: 8'-0"



UPPER FLOOR PLAN
Ceiling Height: 8'-0"



TOP FLOOR PLAN
Ceiling Height: 8'-0"

LOWER FLOOR TOTAL:	298 SQ. FT.
MAIN FLOOR TOTAL:	373 SQ. FT.
UPPER FLOOR TOTAL:	428 SQ. FT.
TOP FLOOR TOTAL:	280 SQ. FT.
TOTAL:	1,379 SQ. FT.
PATIO:	186 SQ. FT.
PORCH:	24 SQ. FT.
CRAWL SPACE:	44 SQ. FT.

