

11673 MORRIS STREET, MAPLE RIDGE, BC

LOWER FLOOR TOTAL: 941 SQ.FT.
MAIN FLOOR TOTAL: 1,616 SQ.FT.
TOTAL: 2,557 SQ.FT.
GARAGE: 272 SQ. FT.
BALCONY: 99 SQ. FT.



LOWER FLOOR PLAN
Ceiling Height: 8'-0"



MAIN FLOOR PLAN
Ceiling Height: 8'-0"



Dan Edwards
778-889-6957
Dano@themacnabs.com

THE FLOOR PLAN ILLUSTRATION IS NOT SUITABLE FOR CONSTRUCTION/ ARCHITECTURAL PURPOSES.
MEASUREMENTS ARE APPROXIMATE AND MAY NOT BE TO SCALE. E&O INSURED.

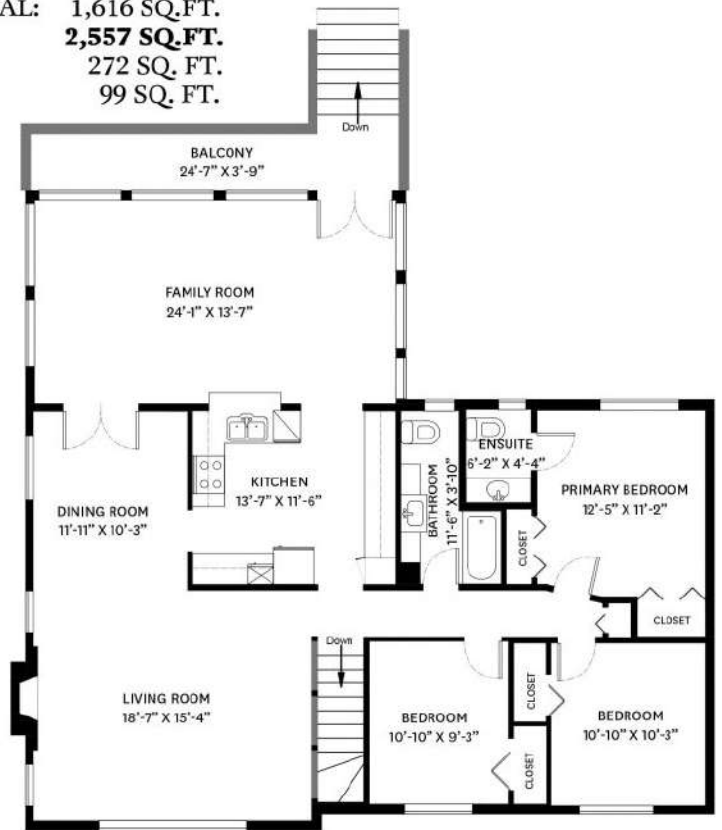
floor plan designed by
ishot.ca Enterprises Inc.
604-368-7979
<http://ishot.ca>

11673 MORRIS STREET, MAPLE RIDGE, BC

LOWER FLOOR TOTAL: 941 SQ.FT.
 MAIN FLOOR TOTAL: 1,616 SQ.FT.
TOTAL: 2,557 SQ.FT.
 GARAGE: 272 SQ. FT.
 BALCONY: 99 SQ. FT.



LOWER FLOOR PLAN
 Ceiling Height: 8'-0"



MAIN FLOOR PLAN
 Ceiling Height: 8'-0"

