

601 - 7321 HALIFAX STREET, BURNABY, BC

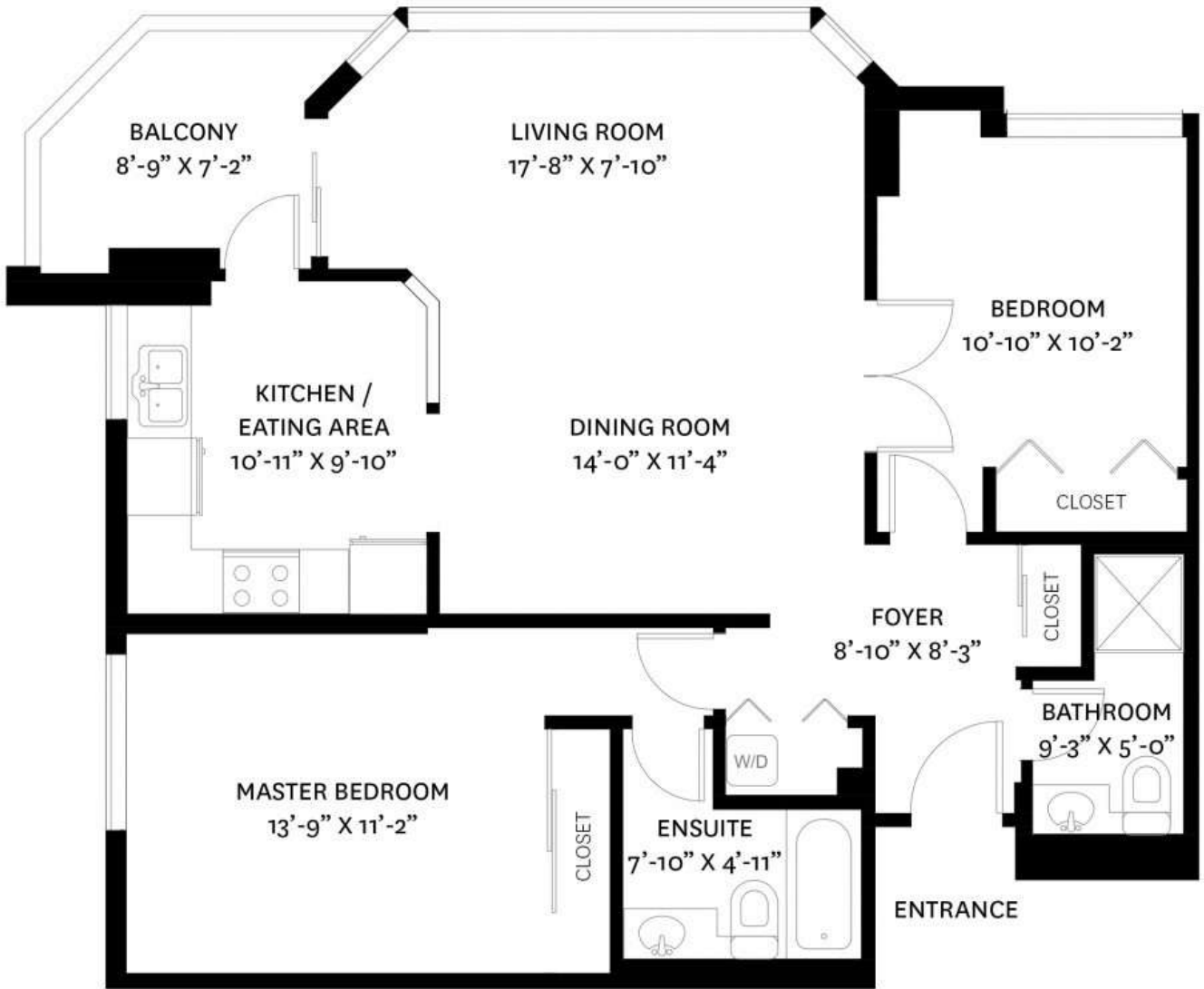
MAIN FLOOR TOTAL: 1,000 SQ. FT.
BALCONY: 63 SQ. FT.



MAIN FLOOR PLAN
Ceiling Height: 8'-0"

601 - 7321 HALIFAX STREET, BURNABY, BC

MAIN FLOOR TOTAL: 1,000 SQ. FT.
BALCONY: 63 SQ. FT.



MAIN FLOOR PLAN
Ceiling Height: 8'-0"

