

**25-19704 55A AVENUE, LANGLEY, BC**

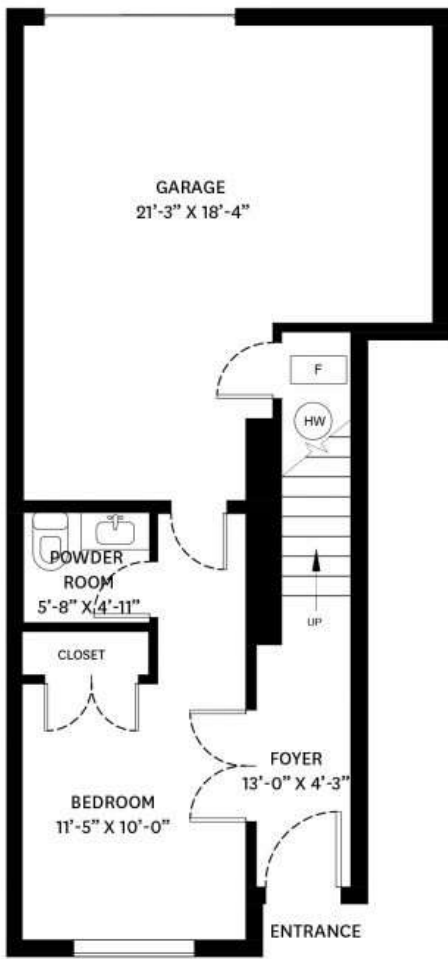
LOWER FLOOR TOTAL: 302 SQ.FT. GARAGE: 410 SQ.FT.  
MAIN FLOOR TOTAL: 727 SQ.FT. BALCONY: 127 SQ. FT.  
UPPER FLOOR TOTAL: 725 SQ.FT.  
**TOTAL: 1,754 SQ.FT.**



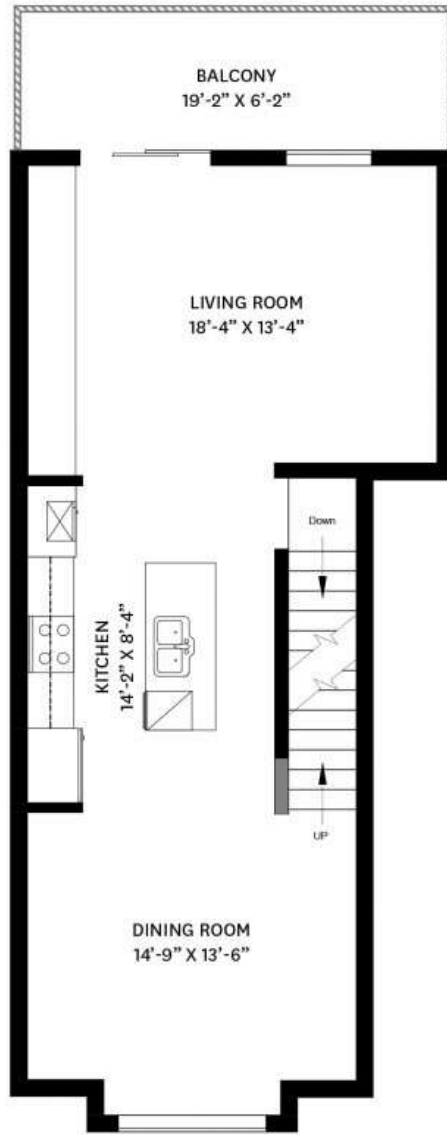
**UPPER FLOOR PLAN**  
Ceiling Height: 8'-0"

**MAIN FLOOR PLAN**  
Ceiling Height: 9'-0"

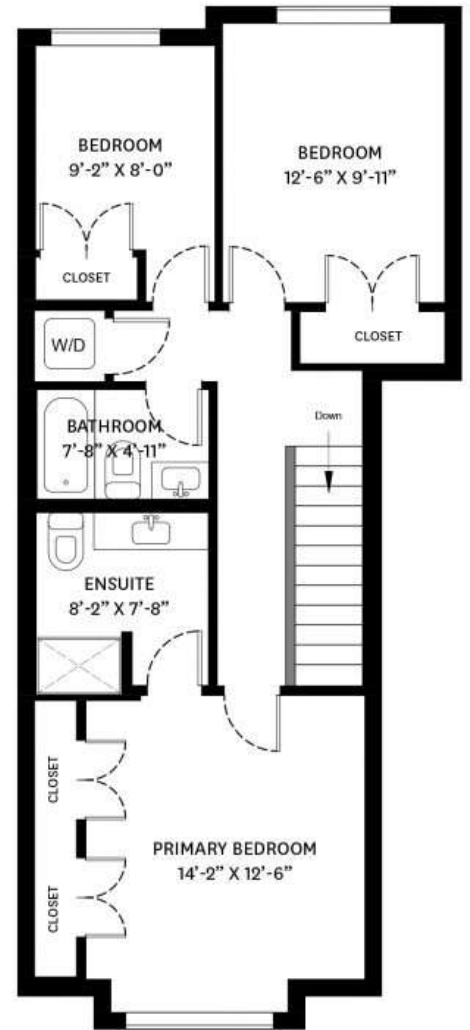
**LOWER FLOOR PLAN**  
Ceiling Height: 8'-0"



**LOWER FLOOR PLAN**  
Ceiling Height: 8'-0"



**MAIN FLOOR PLAN**  
Ceiling Height: 9'-0"



**UPPER FLOOR PLAN**  
Ceiling Height: 8'-0"