

1882 PURCELL WAY, NORTH VANCOUVER, BC

MAIN FLOOR TOTAL: 663 SQ.FT. PATIO: 191 SQ. FT.

UPPER FLOOR TOTAL: 612 SQ.FT.

TOTAL: 1,275 SQ.FT.



MAIN FLOOR PLAN
Ceiling Height: 7'-11"



UPPER FLOOR PLAN
Ceiling Height: 7'-10"

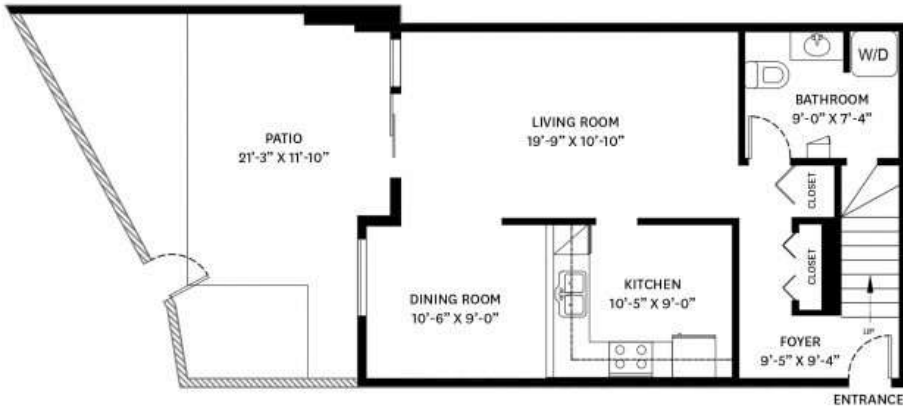


1882 PURCELL WAY, NORTH VANCOUVER, BC

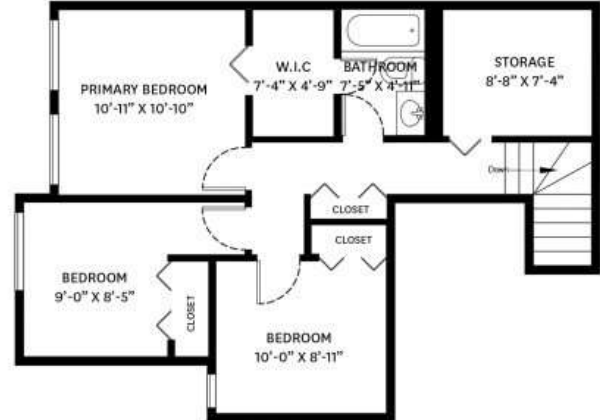
MAIN FLOOR TOTAL: 663 SQ.FT. PATIO: 191 SQ. FT.

UPPER FLOOR TOTAL: 612 SQ.FT.

TOTAL: 1,275 SQ.FT.



MAIN FLOOR PLAN
Ceiling Height: 7'-11"



UPPER FLOOR PLAN
Ceiling Height: 7'-10"

