

# 408-200 KEARY STREET, NEW WESTMINSTER, BC

**MAIN FLOOR TOTAL: 663 SQ. FT.**  
**BALCONY: 47 SQ. FT.**

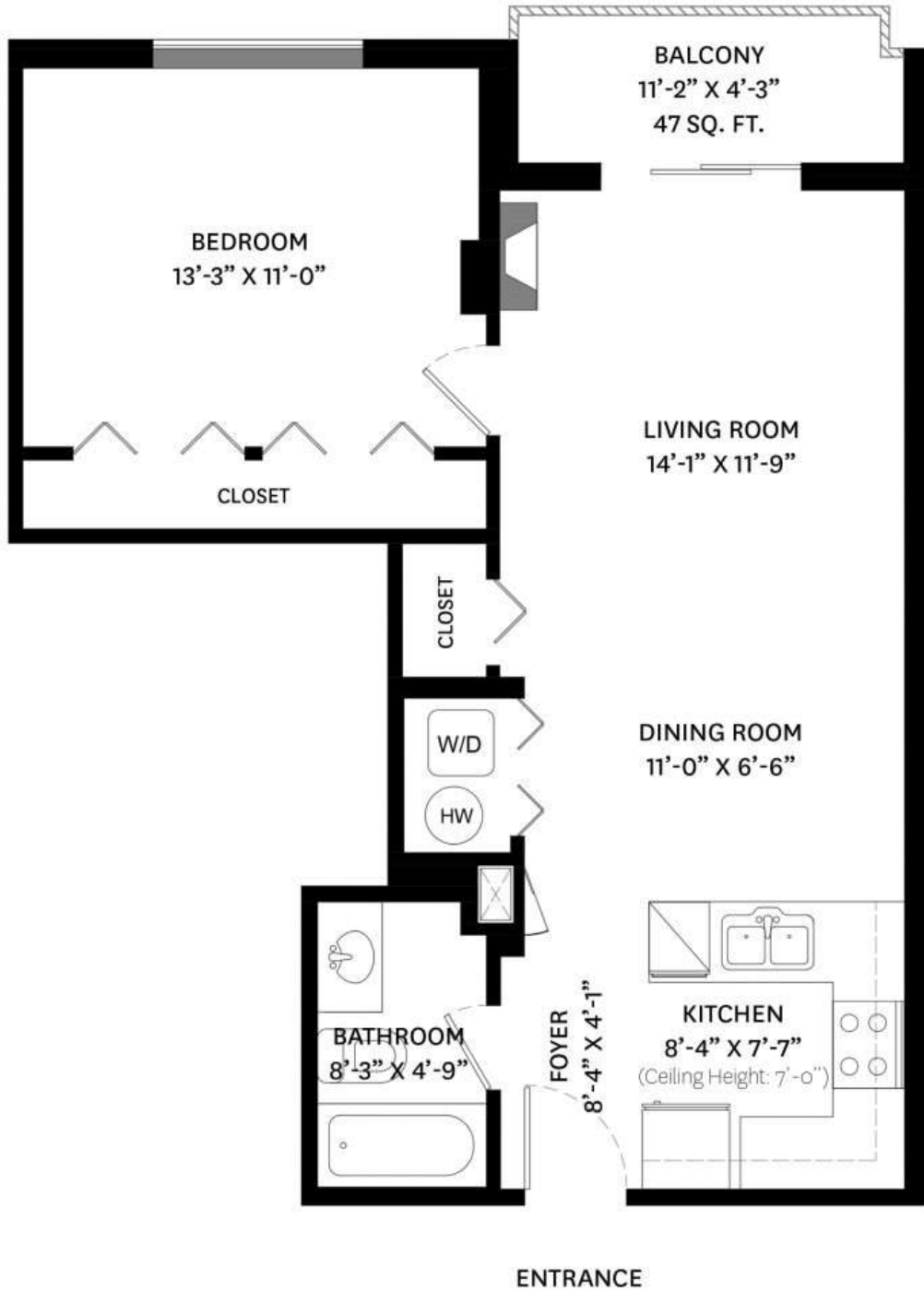


**MAIN FLOOR PLAN**  
Ceiling Height: 8'-0"



# 408-200 KEARY STREET, NEW WESTMINSTER, BC

**MAIN FLOOR TOTAL: 663 SQ. FT.**  
**BALCONY: 47 SQ. FT.**



**MAIN FLOOR PLAN**  
Ceiling Height: 8'-0"

