

202 - 721 HAMILTON STREET, NEW WESTMINSTER, BC

MAIN FLOOR TOTAL: 824 SQ.FT.
BALCONY: 102 SQ. FT.



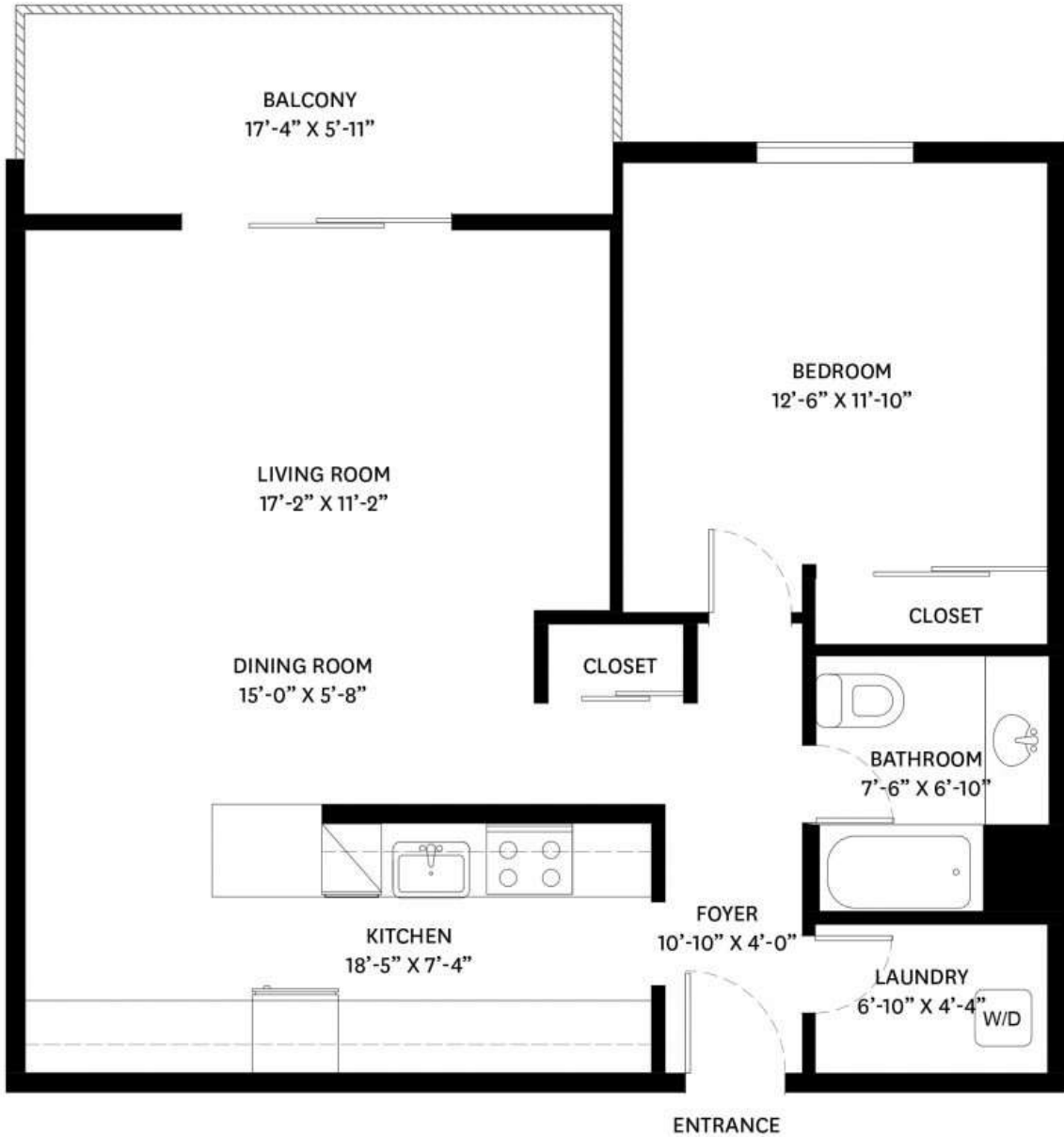
ENTRANCE

MAIN FLOOR PLAN
Ceiling Height: 7'-11"



202 - 721 HAMILTON STREET, NEW WESTMINSTER, BC

MAIN FLOOR TOTAL: 824 SQ.FT.
BALCONY: 102 SQ. FT.



MAIN FLOOR PLAN
Ceiling Height: 7'-11"

