

2378 MARIANA PLACE, COQUITLAM, BC

LOWER FLOOR TOTAL: 986 SQ.FT. **DECK:** 446 SQ.FT.
MAIN FLOOR TOTAL: 1,097 SQ.FT. **GARAGE:** 389 SQ.FT.
UPPER FLOOR TOTAL: 958 SQ.FT. **PATIO:** 359 SQ.FT.
TOTAL: 3,041 SQ.FT. **WORKSHOP:** 132 SQ.FT.



UPPER FLOOR PLAN
Ceiling Height: 7'-11"



MAIN FLOOR PLAN
Ceiling Height: 7'-11"



LOWER FLOOR PLAN
Ceiling Height: 8'-6"



Kyle Preston
 778-773-3299
 kyle@themacnabs.com

THE FLOOR PLAN ILLUSTRATION IS NOT SUITABLE FOR CONSTRUCTION/ ARCHITECTURAL PURPOSES.
 MEASUREMENTS ARE APPROXIMATE AND MAY NOT BE TO SCALE. E&O INSURED.

floor plan designed by
 ishot.ca Enterprises Inc.
 604-368-7979
 http://ishot.ca

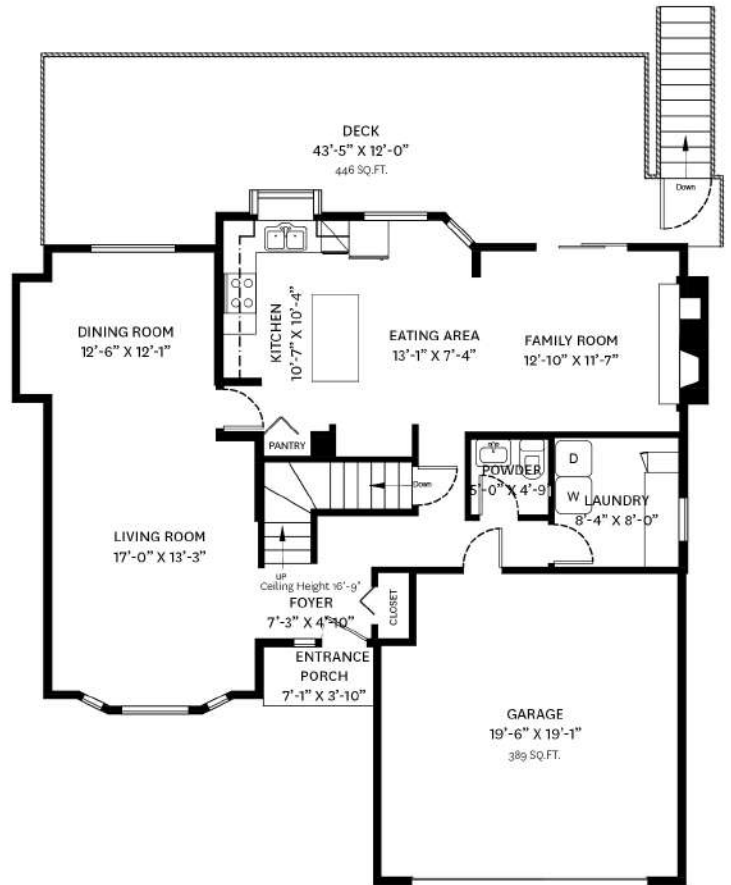
2378 MARIANA PLACE, COQUITLAM, BC

LOWER FLOOR TOTAL: 986 SQ.FT.
 MAIN FLOOR TOTAL: 1,097 SQ.FT.
 UPPER FLOOR TOTAL: 958 SQ.FT.
TOTAL: 3,041 SQ.FT.

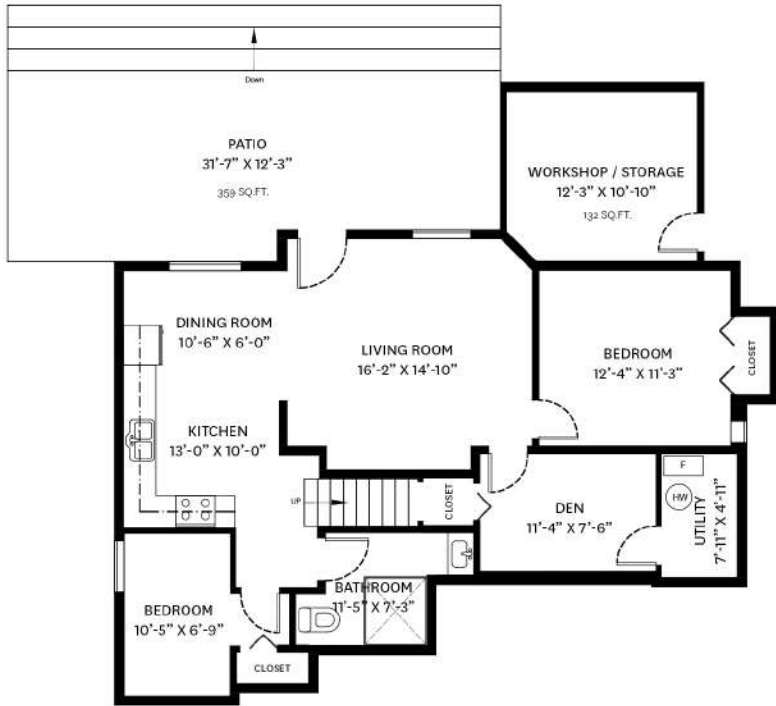
GARAGE: 389 SQ.FT.
DECK: 446 SQ.FT.
PORCH: 27 SQ.FT.
PATIO: 359 SQ.FT.
WORKSHOP: 132 SQ.FT.



UPPER FLOOR PLAN
 Ceiling Height: 7'-11"



MAIN FLOOR PLAN
 Ceiling Height: 7'-11"



LOWER FLOOR PLAN
 Ceiling Height: 8'-6"