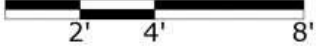


408-2353 MARPOLE AVENUE, PORT COQUITLAM, BC

MAIN FLOOR TOTAL: 915 SQ.FT.
BALCONY: 50 SQ. FT.

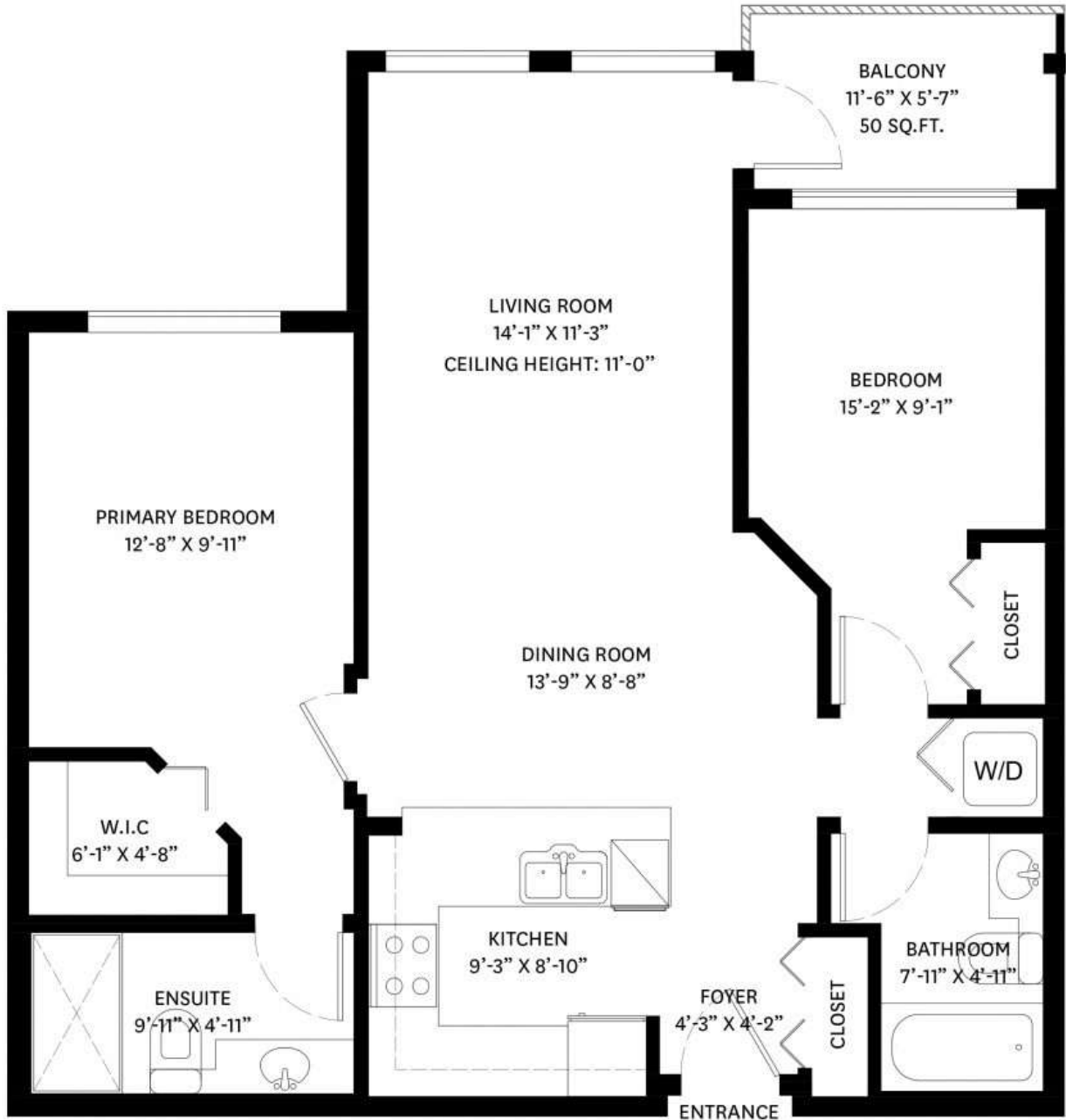


MAIN FLOOR PLAN
Ceiling Height: 9'-11"



408-2353 MARPOLE AVENUE, PORT COQUITLAM, BC

MAIN FLOOR TOTAL: 915 SQ.FT.
BALCONY: 50 SQ. FT.



MAIN FLOOR PLAN
Ceiling Height: 9'-11"

