

79-2428 NILE GATE PORT COQUITLAM, BC

LOWER FLOOR TOTAL: 235 SQ.FT. BALCONY: 103 SQ. FT.
MAIN FLOOR TOTAL: 531 SQ.FT. YARD: 151 SQ. FT.
UPPER FLOOR TOTAL: 494 SQ.FT. GARAGE: 276 SQ. FT.
TOTAL: 1,260 SQ.FT. CARPORT: 166 SQ. FT.

UPPER FLOOR PLAN
Ceiling Height: 8'-0"



MAIN FLOOR PLAN
Ceiling Height: 8'-11"



LOWER FLOOR PLAN
Ceiling Height: 8'-11"

79-2428 NILE GATE PORT COQUITLAM, BC

LOWER FLOOR TOTAL: 235 SQ.FT. BALCONY: 103 SQ. FT.
MAIN FLOOR TOTAL: 531 SQ.FT. YARD: 151 SQ. FT.
UPPER FLOOR TOTAL: 494 SQ.FT. GARAGE: 276 SQ. FT.
TOTAL: 1,260 SQ.FT. CARPORT: 166 SQ. FT.



LOWER FLOOR PLAN
Ceiling Height: 8'-11"



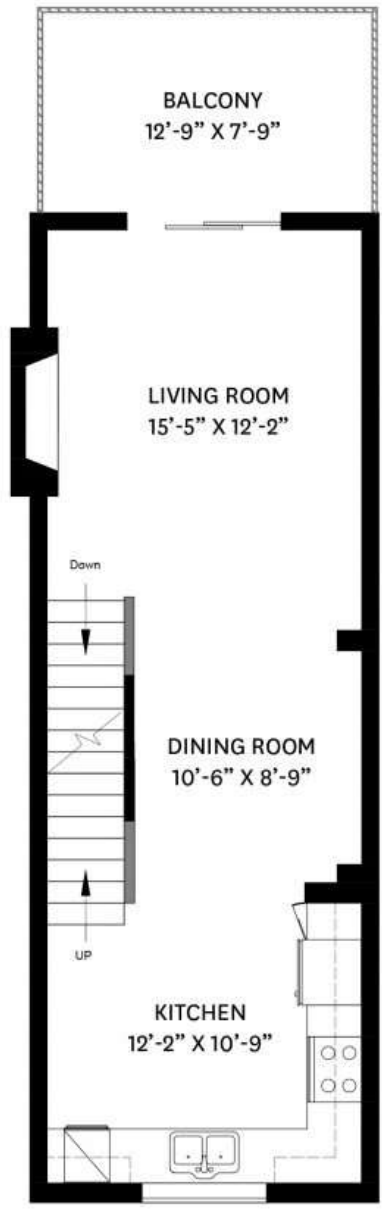
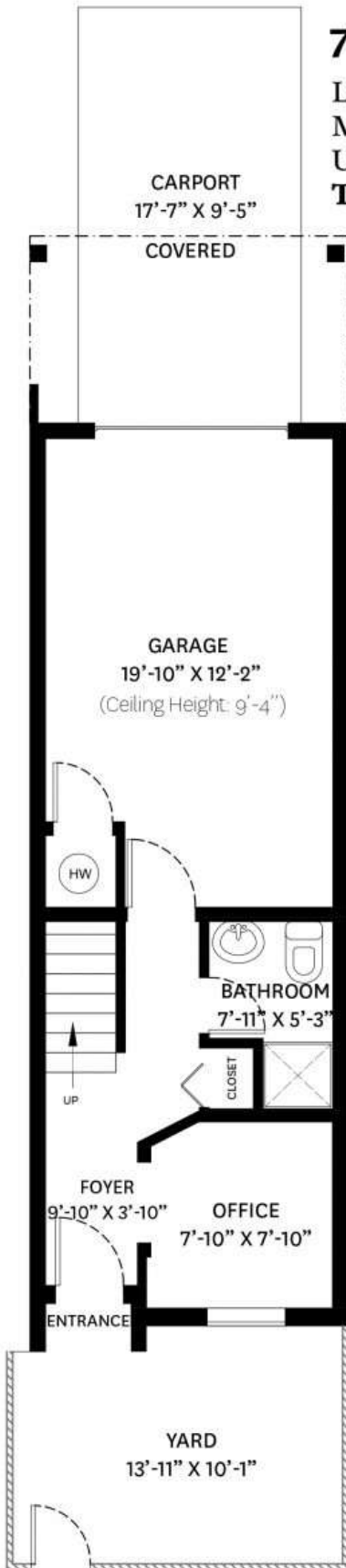
MAIN FLOOR PLAN
Ceiling Height: 8'-11"



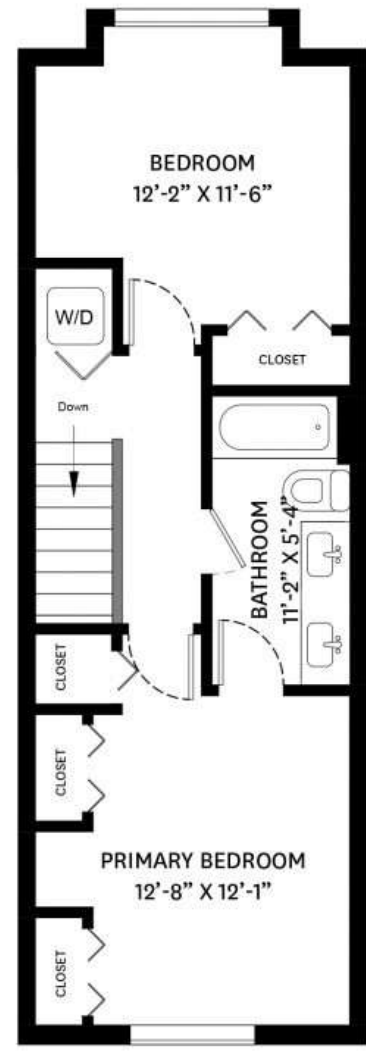
UPPER FLOOR PLAN
Ceiling Height: 8'-0"

79-2428 NILE GATE PORT COQUITLAM, BC

LOWER FLOOR TOTAL: 235 SQ.FT. BALCONY: 103 SQ. FT.
 MAIN FLOOR TOTAL: 531 SQ.FT. YARD: 151 SQ. FT.
 UPPER FLOOR TOTAL: 494 SQ.FT. GARAGE: 276 SQ. FT.
TOTAL: 1,260 SQ.FT. CARPORT: 166 SQ. FT.



MAIN FLOOR PLAN
Ceiling Height: 8'-11"



UPPER FLOOR PLAN
Ceiling Height: 8'-0"

LOWER FLOOR PLAN
Ceiling Height: 8'-11"

