

# 5A-501 COCHRANE AVENUE, COQUITLAM, BC

**MAIN FLOOR TOTAL: 1,371 SQ. FT.**

**PATIO: 502 SQ. FT.**



## MAIN FLOOR PLAN

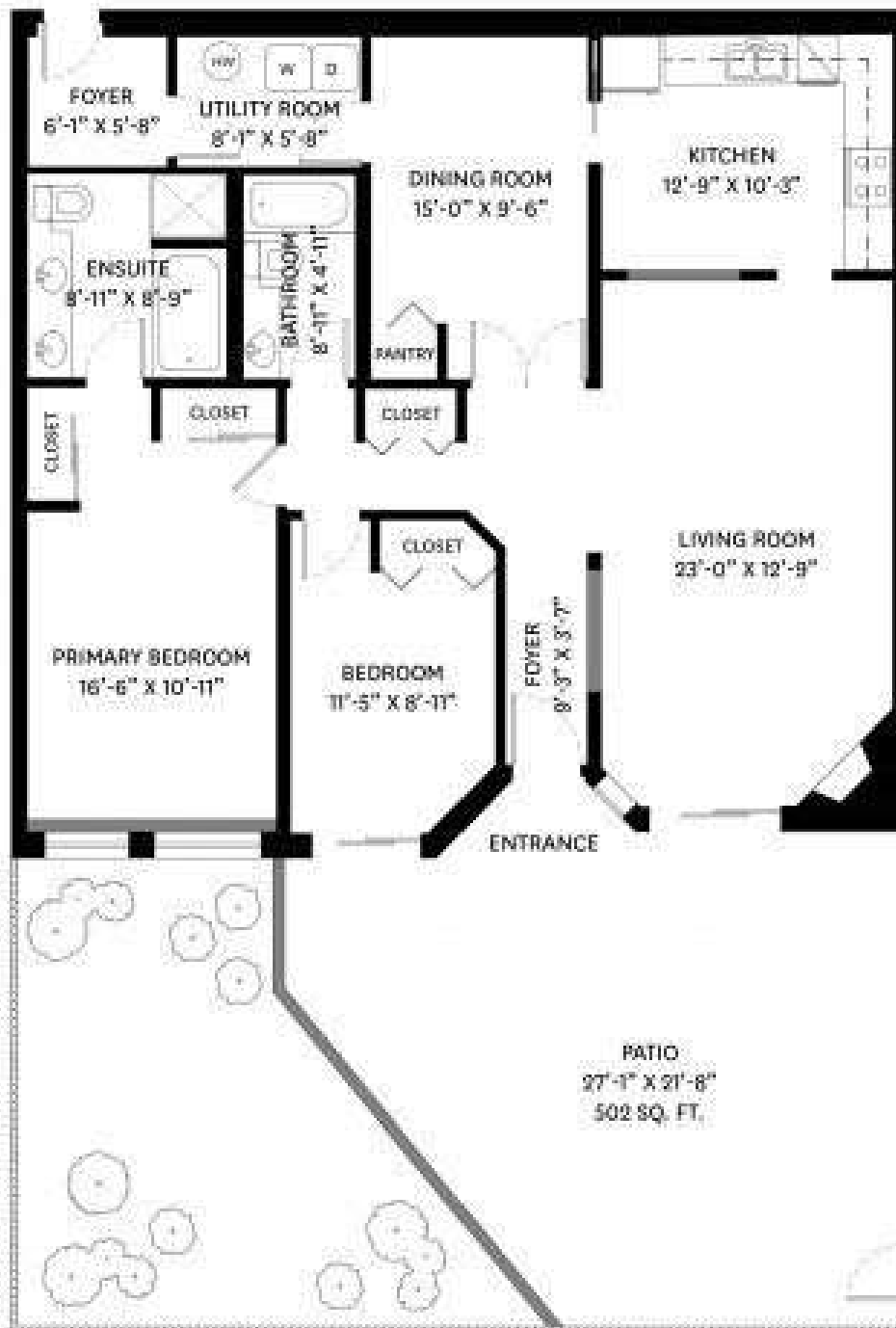
Ceiling Height: 7'-10"



# 5A-501 COCHRANE AVENUE, COQUITLAM, BC

MAIN FLOOR TOTAL: 1,371 SQ. FT.

PATIO: 502 SQ. FT.



MAIN FLOOR PLAN  
Ceiling Height: 7'-10"

