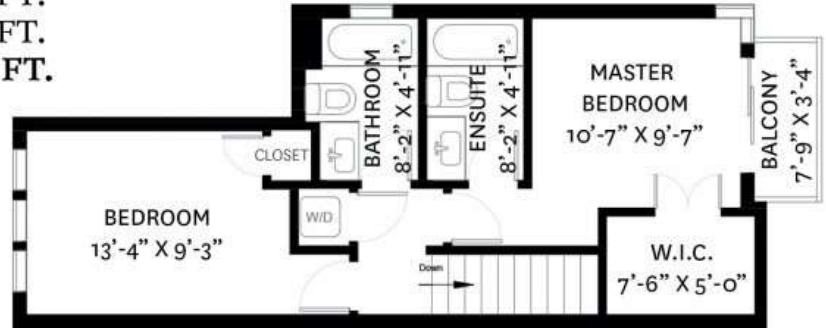


2 - 2820 W 41ST AVENUE, VANCOUVER, BC

LOWER FLOOR TOTAL: 608 SQ. FT.
 MAIN FLOOR TOTAL: 514 SQ. FT.
 UPPER FLOOR TOTAL: 539 SQ. FT.
TOTAL: 1,661 SQ. FT.

GARAGE: 626 SQ. FT.
 BALCONY: 25 SQ. FT.
 DECK: 128 SQ. FT.



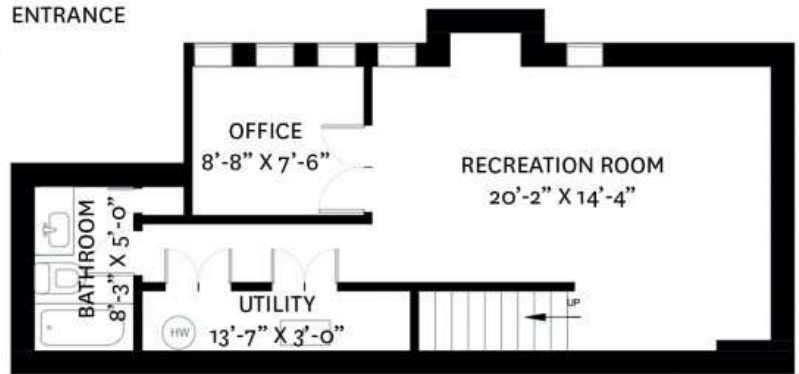
UPPER FLOOR PLAN
 Ceiling Height: 8'-5"



GARAGE FLOOR PLAN
 Ceiling Height: 9'-0"



MAIN FLOOR PLAN
 Ceiling Height: 8'-8"



LOWER FLOOR PLAN
 Ceiling Height: 8'-2"



2 - 2820 W 41ST AVENUE, VANCOUVER, BC

LOWER FLOOR TOTAL: 608 SQ. FT.
 MAIN FLOOR TOTAL: 514 SQ. FT.
 UPPER FLOOR TOTAL: 539 SQ. FT.
TOTAL: 1,661 SQ. FT.

GARAGE: 626 SQ. FT.
 BALCONY: 25 SQ. FT.
 DECK: 128 SQ. FT.

