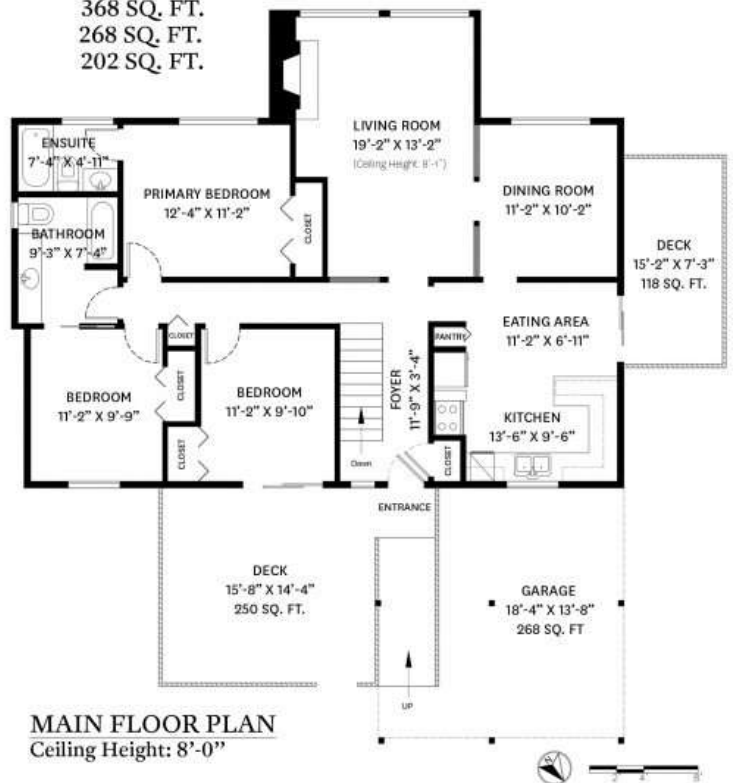


## 1987 CAPE HORN AVENUE, COQUITLAM, BC

**LOWER FLOOR TOTAL:** 1,315 SQ. FT.  
**MAIN FLOOR TOTAL:** 1,336 SQ. FT.  
**TOTAL:** 2,651 SQ. FT.  
**DECK TOTAL:** 368 SQ. FT.  
**GARAGE:** 268 SQ. FT.  
**PATIO:** 202 SQ. FT.



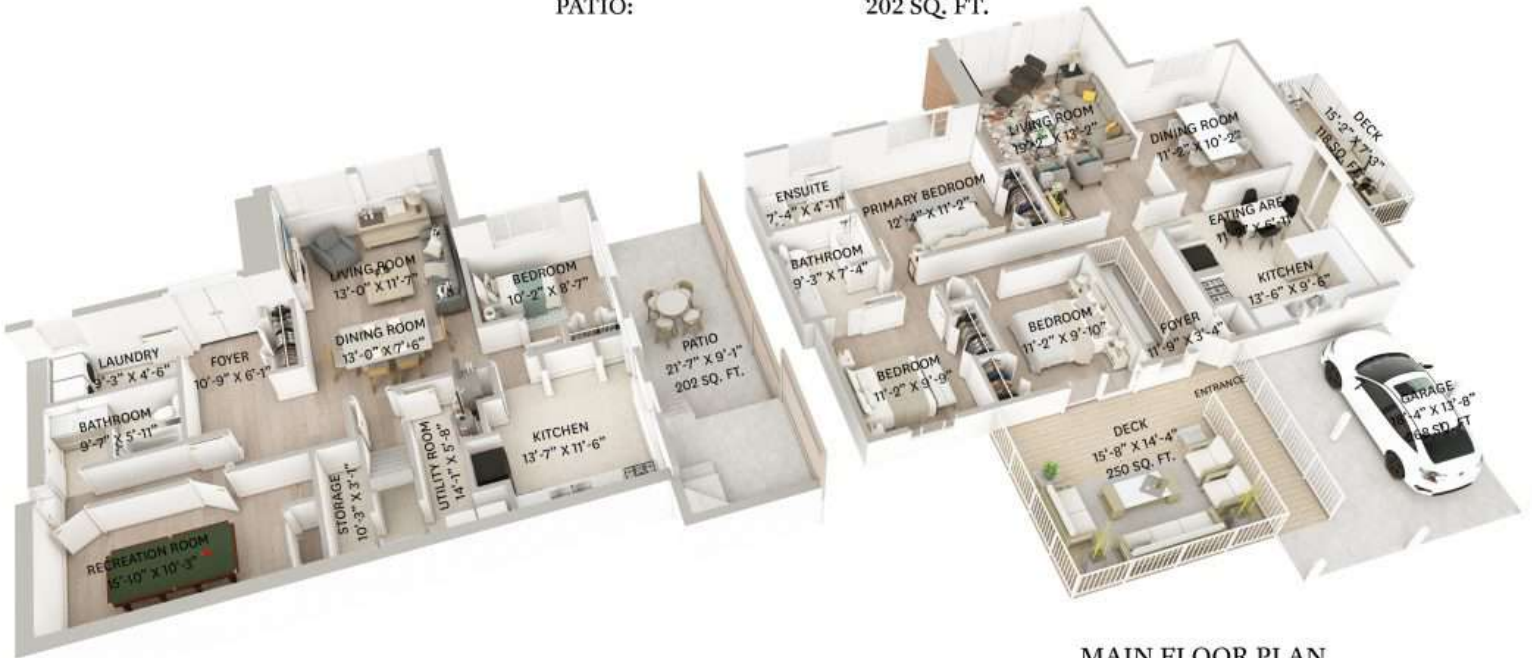
**LOWER FLOOR PLAN**  
Ceiling Height: 7'-8"



**MAIN FLOOR PLAN**  
Ceiling Height: 8'-0"

## 1987 CAPE HORN AVENUE, COQUITLAM, BC

LOWER FLOOR TOTAL: 1,315 SQ. FT.  
 MAIN FLOOR TOTAL: 1,336 SQ. FT.  
**TOTAL: 2,651 SQ. FT.**  
 DECK TOTAL: 368 SQ. FT.  
 GARAGE: 268 SQ. FT.  
 PATIO: 202 SQ. FT.



**LOWER FLOOR PLAN**  
Ceiling Height: 7'-8"

**MAIN FLOOR PLAN**  
Ceiling Height: 8'-0"

