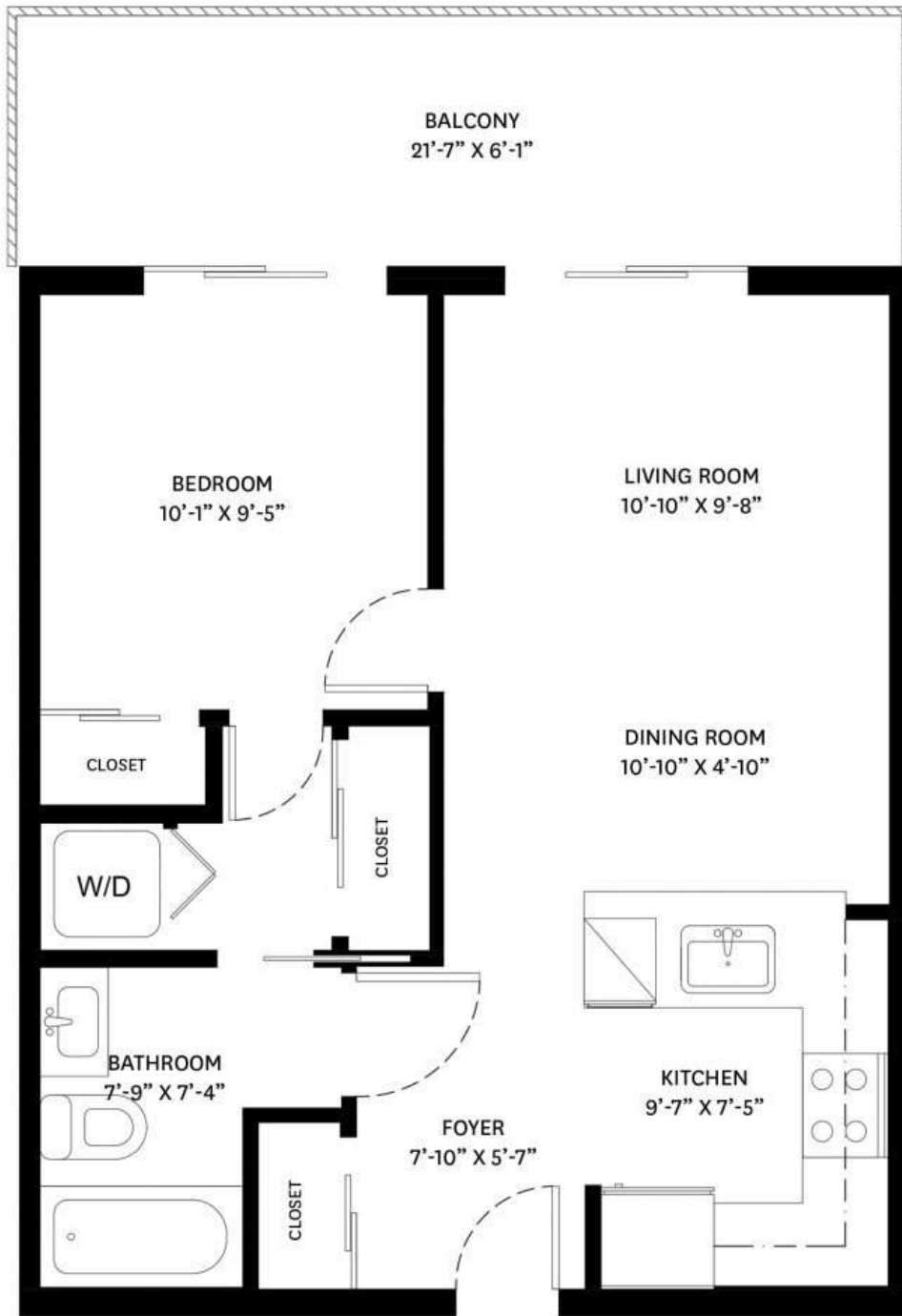


410-2828 MAIN STREET, VANCOUVER, BC

MAIN FLOOR TOTAL: 540 SQ.FT.
BALCONY: 131 SQ. FT.



MAIN FLOOR PLAN
Ceiling Height: 9'-0"

ENTRANCE



410-2828 MAIN STREET, VANCOUVER, BC

MAIN FLOOR TOTAL: 540 SQ.FT.
BALCONY: 131 SQ. FT.



MAIN FLOOR PLAN
Ceiling Height: 9'-0"

