

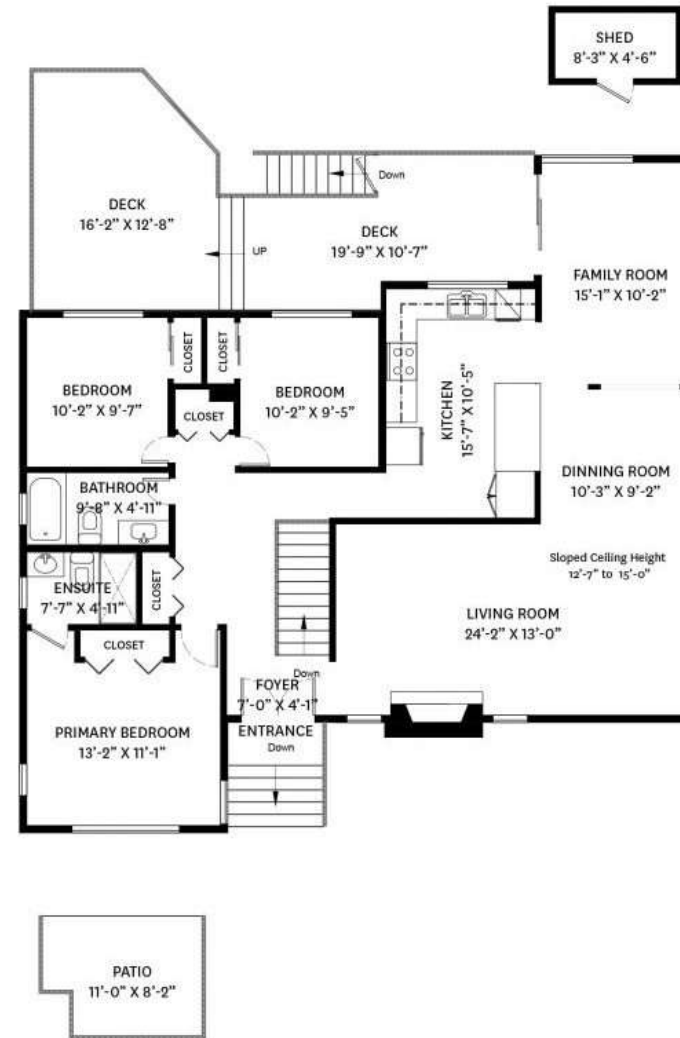
SWIMMING POOL PLAN



LOWER FLOOR PLAN
Ceiling Height: 7'-11"

LOWER FLOOR TOTAL: 1,175 SQ.FT.
 MAIN FLOOR TOTAL: 1,540 SQ.FT.
TOTAL: 2,715 SQ.FT.

PATIO TOTAL: 1,520 SQ.FT.
 DECK TOTAL: 353 SQ.FT.
 GARAGE: 431 SQ.FT.



MAIN FLOOR PLAN
Ceiling Height: 7'-10"

4547 204A STREET, LANGLEY, BC

LOWER FLOOR TOTAL: 1,175 SQ.FT. PATIO TOTAL: 1,520 SQ.FT.
 MAIN FLOOR TOTAL: 1,540 SQ.FT. DECK TOTAL: 353 SQ.FT.
TOTAL: 2,715 SQ.FT. GARAGE: 431 SQ.FT.



LOWER FLOOR PLAN
 Ceiling Height: 7'-11"



MAIN FLOOR PLAN
 Ceiling Height: 7'-10"

