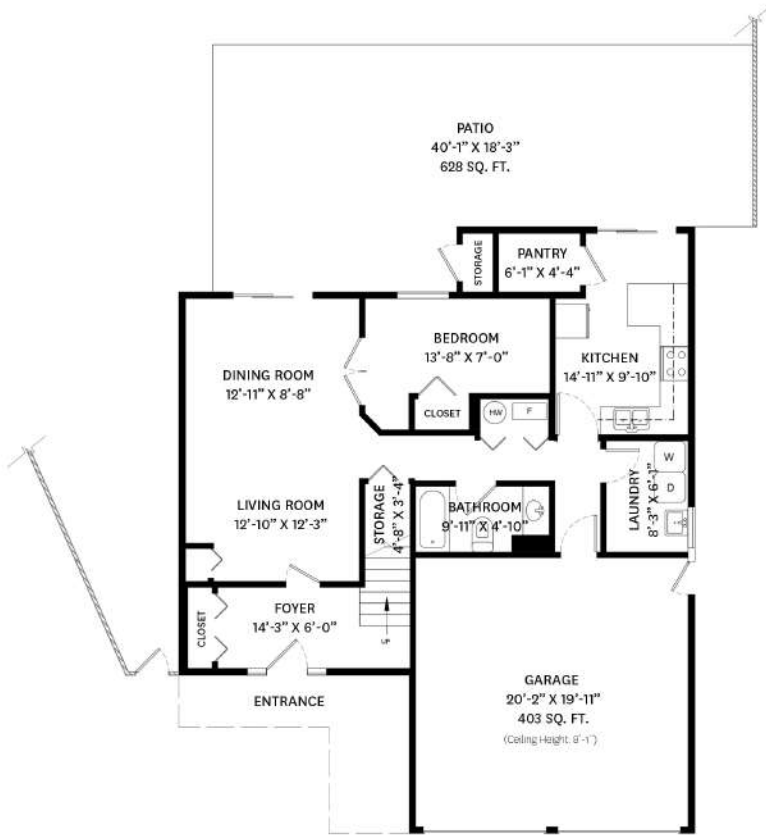
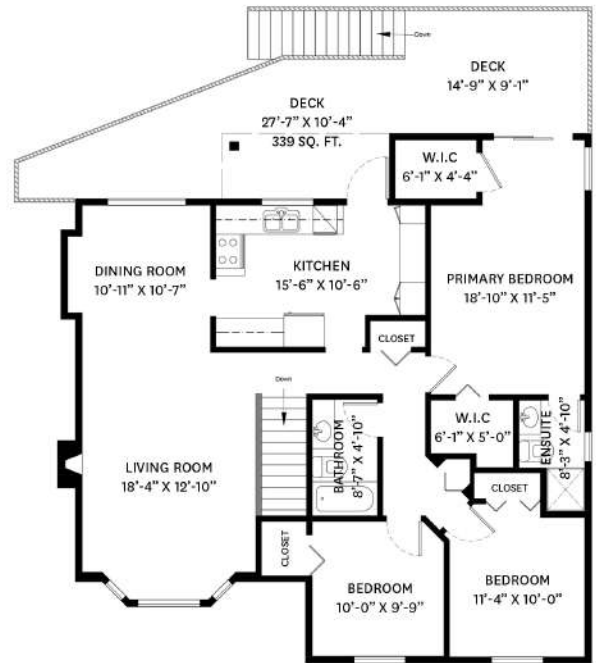


11653 202B STREET, MAPLE RIDGE, BC

LOWER FLOOR TOTAL: 992 SQ. FT. PATIO: 628 SQ. FT.  
 MAIN FLOOR TOTAL: 1,309 SQ. FT. GARAGE: 403 SQ. FT.  
**TOTAL: 2,301 SQ. FT. DECK: 339 SQ. FT.**



**LOWER FLOOR PLAN**  
 Ceiling Height: 8'-0"



**MAIN FLOOR PLAN**  
 Ceiling Height: 8'-1"



**11653 202B STREET, MAPLE RIDGE, BC**

**LOWER FLOOR TOTAL: 992 SQ. FT. PATIO: 628 SQ. FT.**  
**MAIN FLOOR TOTAL: 1,309 SQ. FT. GARAGE: 403 SQ. FT.**  
**TOTAL: 2,301 SQ. FT. DECK: 339 SQ. FT.**



**Kyle Preston**  
 778-773-3299  
 kyle@themacnabs.com

floor plan designed by  
 ishot.ca Enterprises Inc.  
 604-368-7979  
 http://ishot.ca

THE FLOOR PLAN ILLUSTRATION IS NOT SUITABLE FOR CONSTRUCTION/ ARCHITECTURAL PURPOSES.  
 MEASUREMENTS ARE APPROXIMATE AND MAY NOT BE TO SCALE. E&O INSURED.