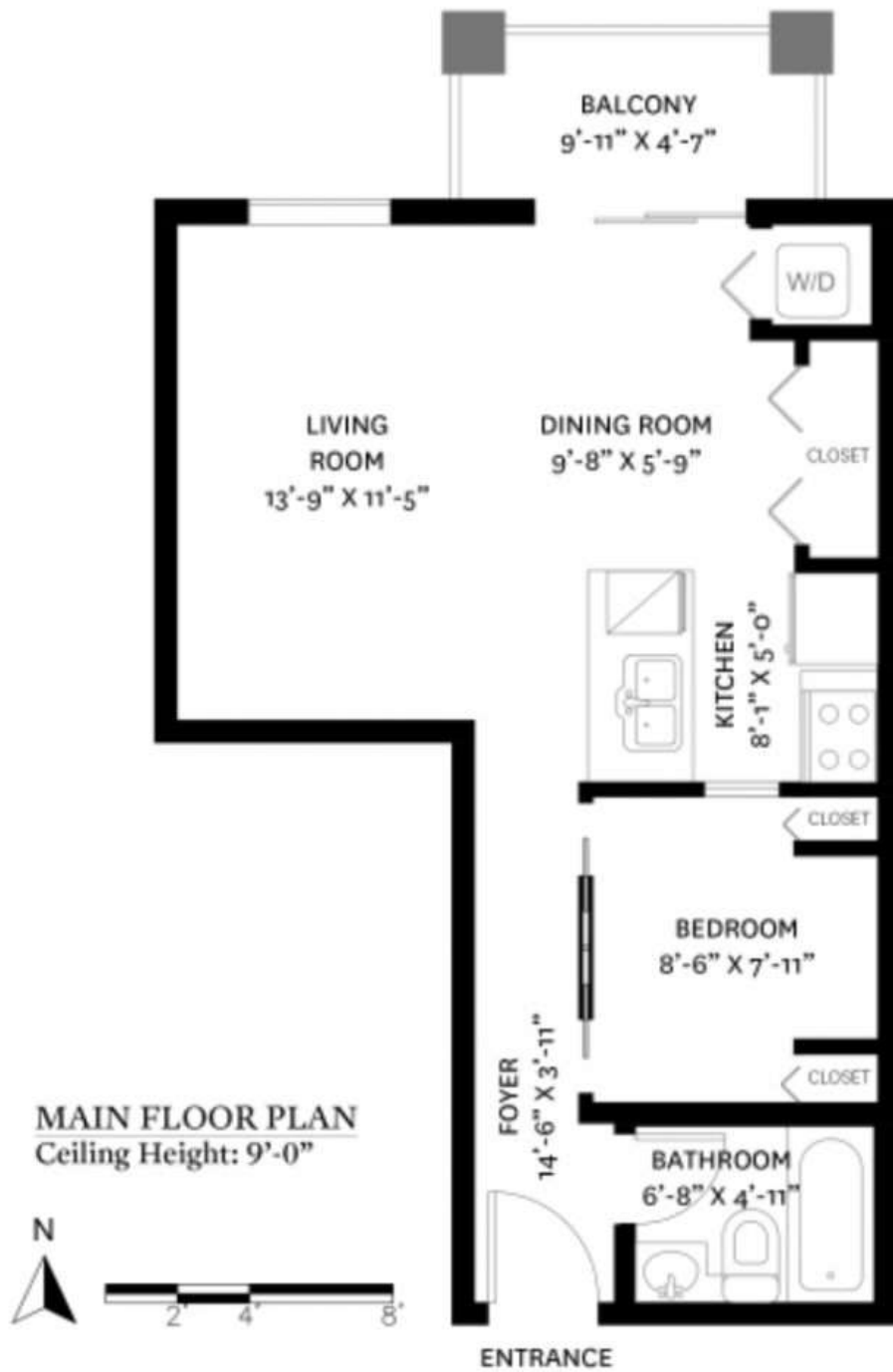


302 - 10455 UNIVERSITY DRIVE, SURREY, BC

MAIN FLOOR TOTAL: 516 SQ. FT.
BALCONY: 46 SQ. FT.



302 - 10455 UNIVERSITY DRIVE, SURREY, BC

MAIN FLOOR TOTAL: 516 SQ. FT.
BALCONY: 46 SQ. FT.



MAIN FLOOR PLAN
Ceiling Height: 9'-0"