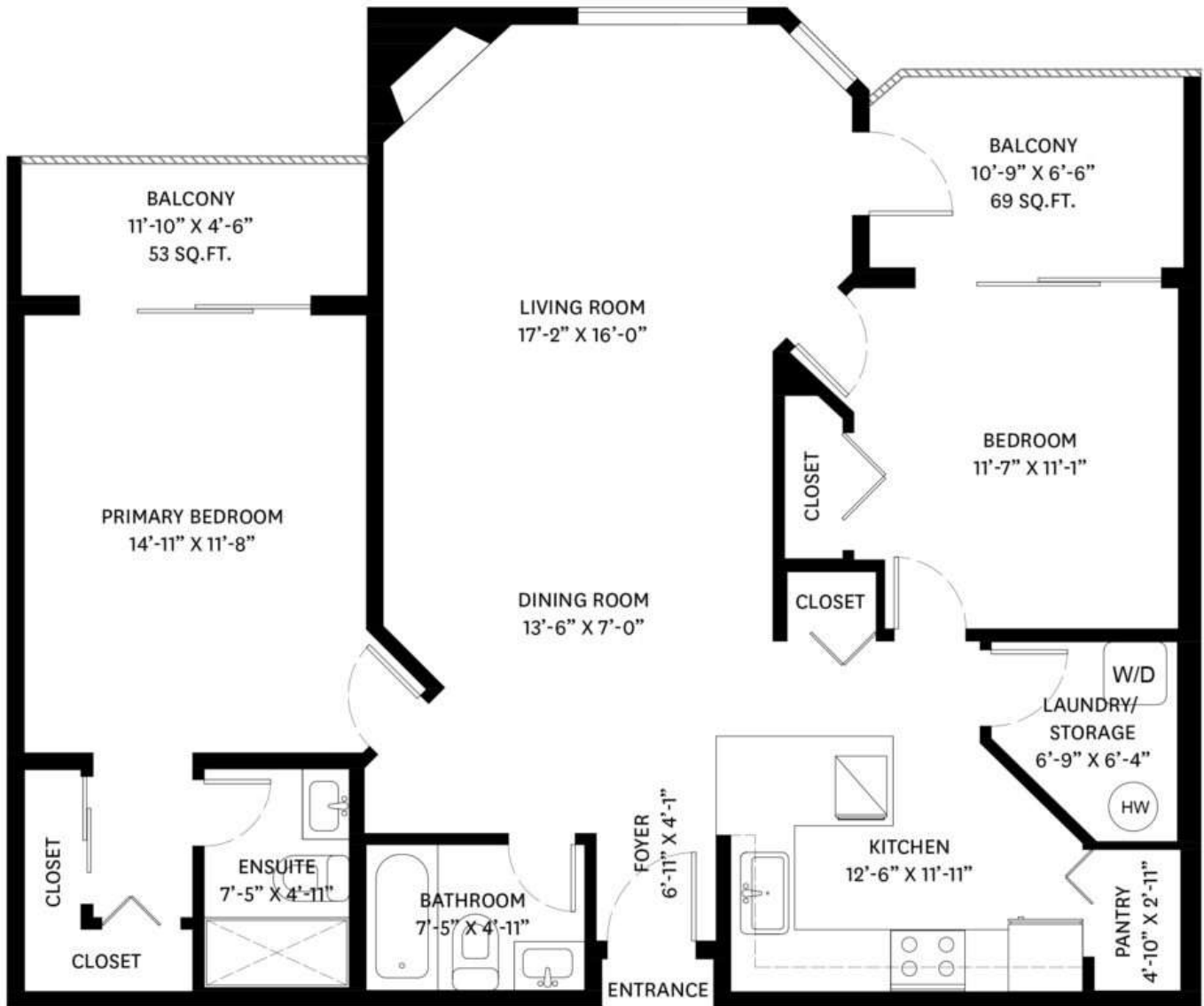


207-1955 SUFFOLK AVENUE, PORT COQUITLAM, BC

MAIN FLOOR TOTAL: 1,129 SQ.FT.
BALCONY TOTAL: 122 SQ. FT.



MAIN FLOOR PLAN
Ceiling Height: 7'-11"



207-1955 SUFFOLK AVENUE, PORT COQUITLAM, BC

MAIN FLOOR TOTAL: 1,129 SQ.FT.
BALCONY TOTAL: 122 SQ. FT.



MAIN FLOOR PLAN
Ceiling Height: 7'-11"

