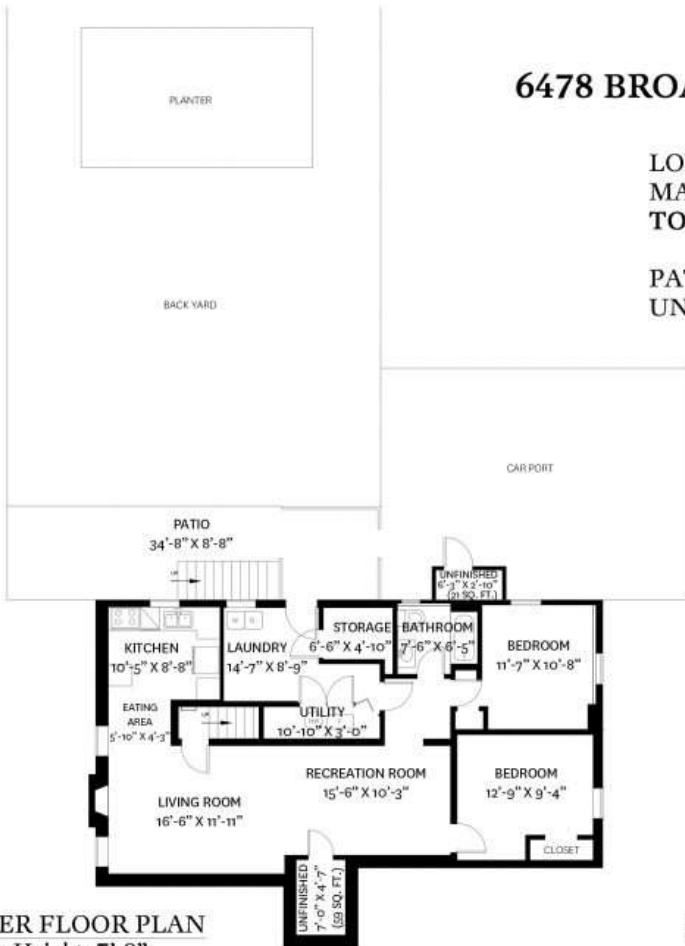


6478 BROADWAY STREET, BURNABY, BC

LOWER FLOOR TOTAL: 1,206 SQ. FT.
 MAIN FLOOR TOTAL: 1,217 SQ. FT.
 TOTAL: 2,423 SQ. FT.

PATIO: 270 SQ. FT.
 UNFINISHED: 80 SQ. FT.



LOWER FLOOR PLAN
 Ceiling Height: 7'-9"



MAIN FLOOR PLAN
 Ceiling Height: 8'-0"

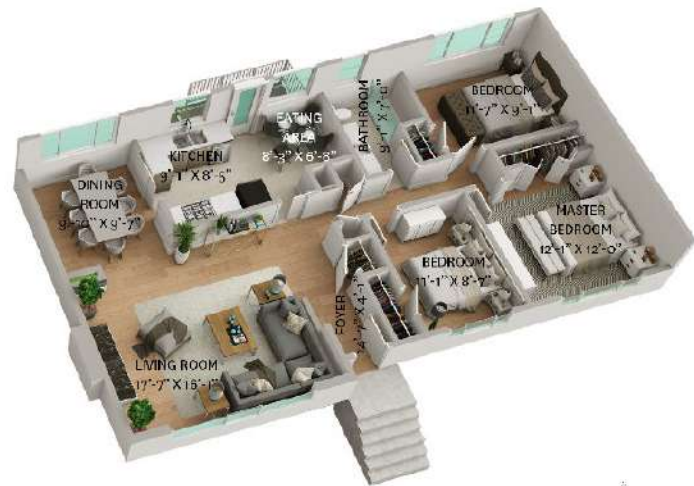
6478 BROADWAY STREET, BURNABY, BC

LOWER FLOOR TOTAL: 1,206 SQ. FT.
 MAIN FLOOR TOTAL: 1,217 SQ. FT.
 TOTAL: 2,423 SQ. FT.

PATIO: 270 SQ. FT.
 UNFINISHED: 80 SQ. FT.



LOWER FLOOR PLAN
 Ceiling Height: 7'-9"



MAIN FLOOR PLAN
 Ceiling Height: 8'-0"



Dan Edwards
 778-889-6957
 Dano@themacnabs.com

floor plan designed by
 Ishot.ca Enterprises Inc.
 604-368-7979
<http://ishot.ca>

THIS FLOOR PLAN ILLUSTRATION IS NOT SUITABLE FOR CONSTRUCTION/ARCHITECTURAL PURPOSES.
 MEASUREMENTS ARE APPROXIMATE AND MAY NOT BE TO SCALE. L&O INSURED.