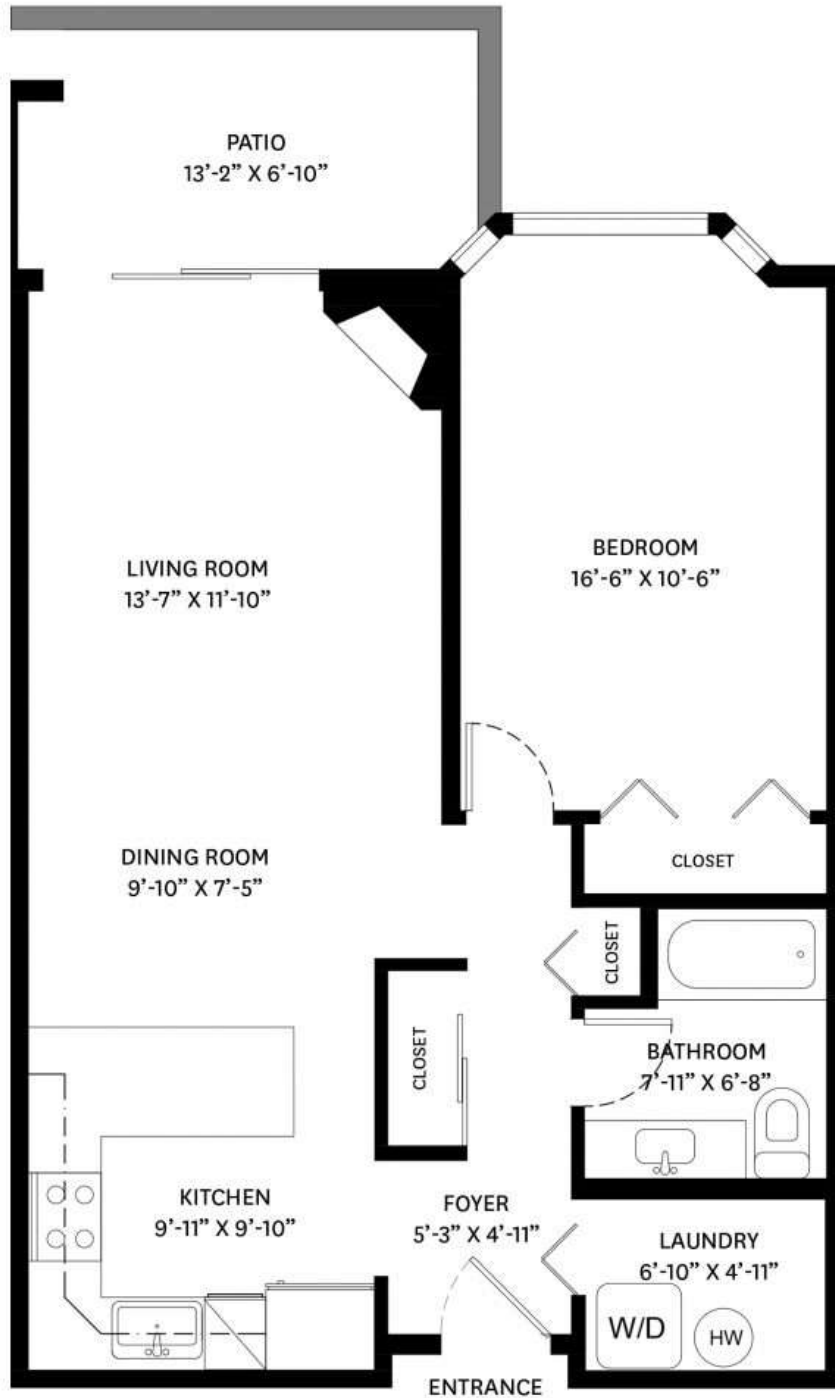


# 110-1215 PACIFIC STREET, COQUITLAM, BC

**MAIN FLOOR TOTAL: 771 SQ.FT.**  
**BALCONY: 87 SQ. FT.**



**MAIN FLOOR PLAN**  
Ceiling Height: 7'-11"



# 110-1215 PACIFIC STREET, COQUITLAM, BC

**MAIN FLOOR TOTAL: 771 SQ.FT.**

**PATIO: 87 SQ. FT.**



**MAIN FLOOR PLAN**  
Ceiling Height: 7'-11"