

142 COLLEGE PARK WAY, PORT MOODY, BC



LOWER FLOOR PLAN
Ceiling Height: 8'-0"

LOWER FLOOR TOTAL: 990 SQ. FT.
 MAIN FLOOR TOTAL: 1,281 SQ. FT.
TOTAL: 2,271 SQ. FT.

GARAGE: 479 SQ. FT.
 PATIO: 352 SQ. FT.
 DECK: 572 SQ. FT.



MAIN FLOOR PLAN
Ceiling Height: 8'-0"

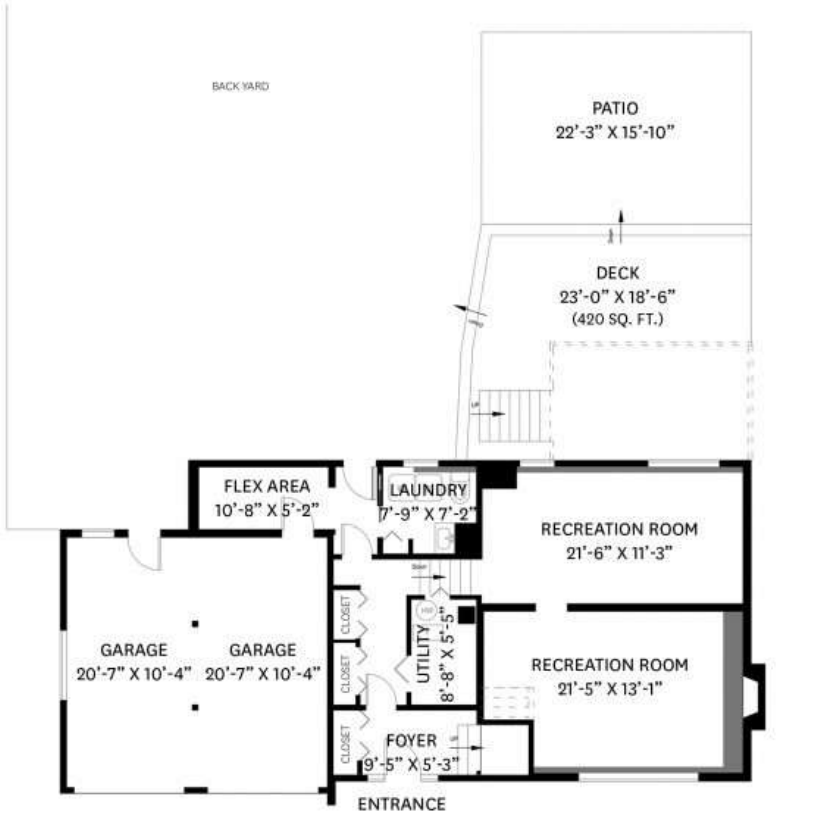


Dan Edwards
 778-889-6957
 Dano@themacnabs.com

floor plan designed by
 ishot.ca Enterprises Inc.
 604-368-7979
<http://ishot.ca>

THIS FLOOR PLAN ILLUSTRATION IS NOT SUITABLE FOR CONSTRUCTION/ARCHITECTURAL PURPOSES.
 MEASUREMENTS ARE APPROXIMATE AND MAY NOT BE TO SCALE. L&O INSURED.

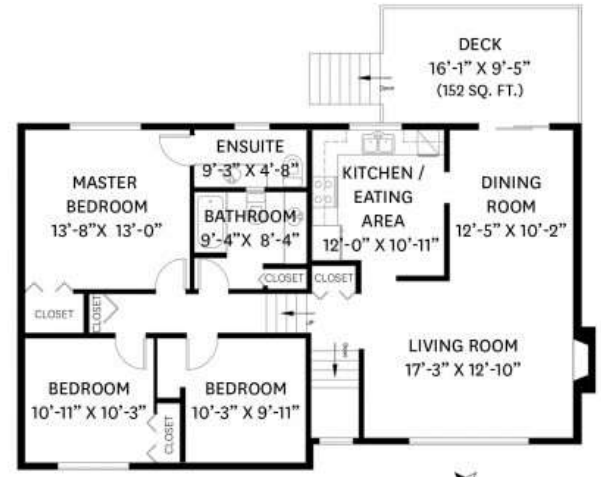
142 COLLEGE PARK WAY, PORT MOODY, BC



LOWER FLOOR PLAN
Ceiling Height: 8'-0"

LOWER FLOOR TOTAL: 990 SQ. FT.
 MAIN FLOOR TOTAL: 1,281 SQ. FT.
 TOTAL: 2,271 SQ. FT.

GARAGE: 479 SQ. FT.
 PATIO: 352 SQ. FT.
 DECK: 572 SQ. FT.



MAIN FLOOR PLAN
Ceiling Height: 8'-0"

