

Jordan Macnab

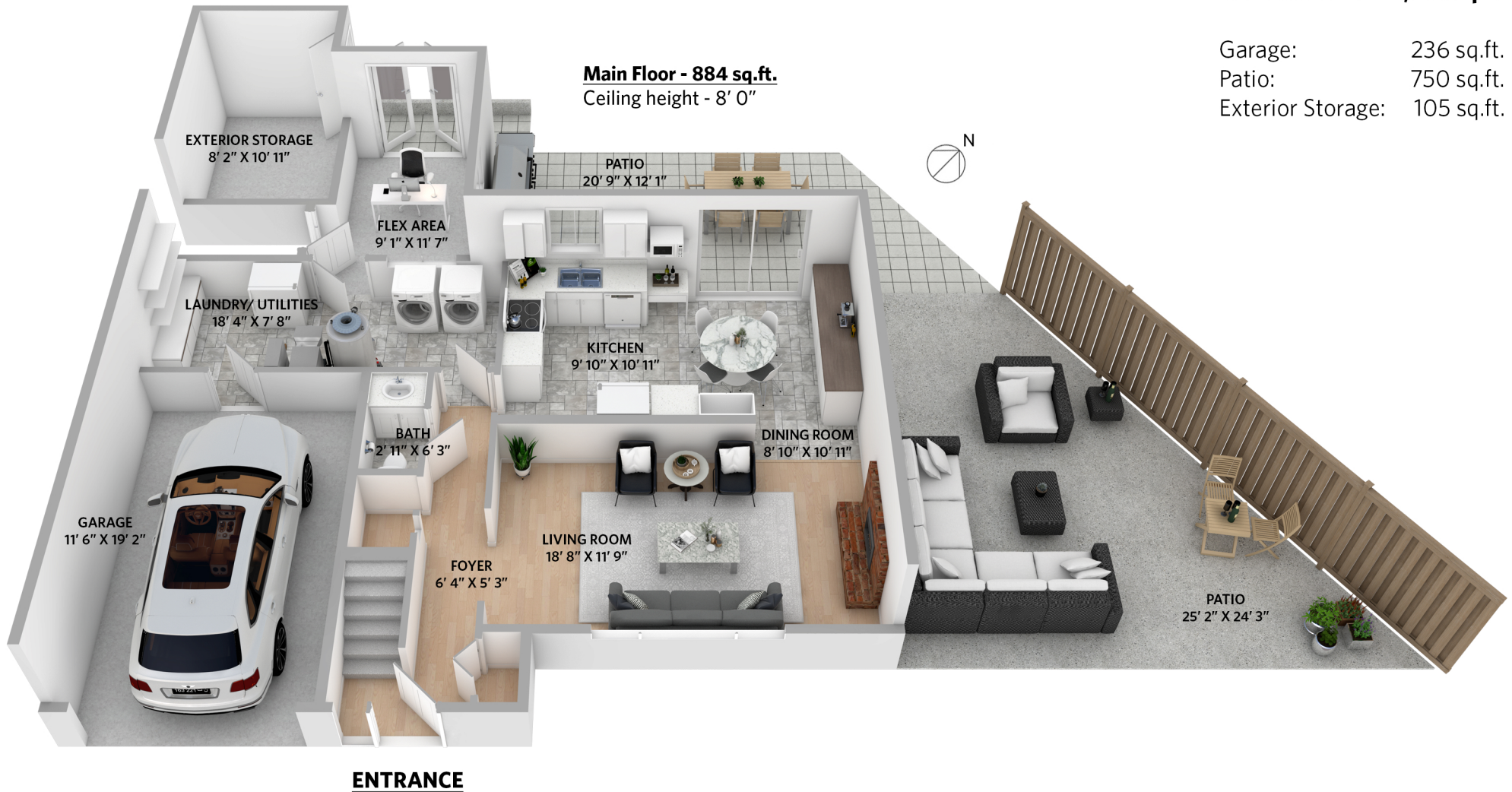
604.551.5695 jordan@themacnabs.com
www.themacnabs.com

1401 Apel Drive, Port Coquitlam

4 bedrooms + 1 1/2 bathrooms

Main Floor: 884 sq.ft.
Upper Floor: 826 sq.ft.
Total Interior: 1,710 sq.ft.

Garage: 236 sq.ft.
Patio: 750 sq.ft.
Exterior Storage: 105 sq.ft.



THE MACNABS

www.OPTIMUMFLOORPLANS.com 2D & 3D Floor Plans 604-729-5033

OPTIMUM
FLOOR PLAN DESIGNS

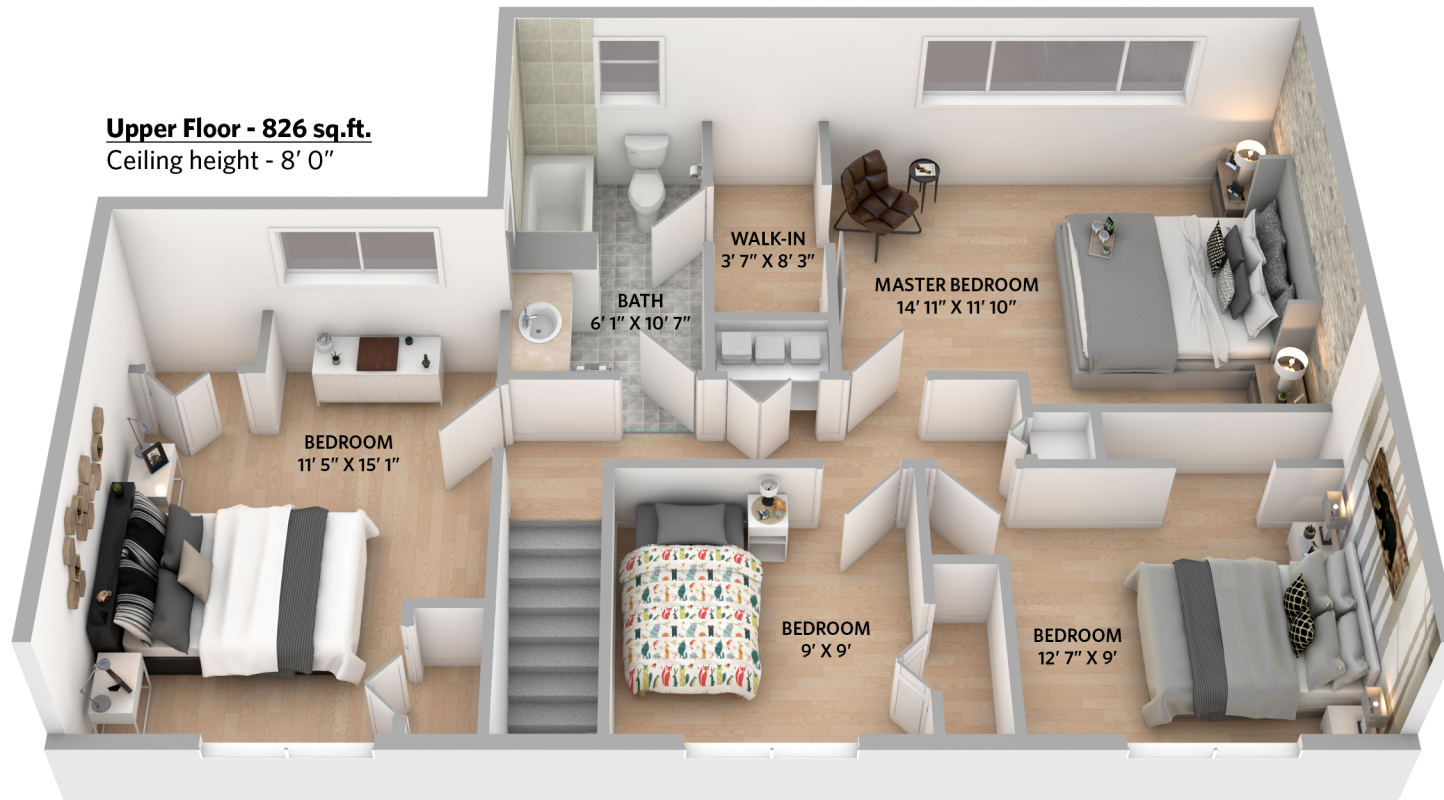
Floor plan measurements, dimensions, square footage, existing structures & features are approximations and for illustrative purposes only. We make no guarantee, warranty or representation, expressed or implied, as to the accuracy and completeness of this rendering. Independent verification is recommended. E&O Insured for \$1,000,000

Jordan Macnab

604.551.5695 jordan@themacnabs.com
www.themacnabs.com

1401 Apel Drive, Port Coquitlam

4 bedrooms + 1 1/2 bathrooms



THE MACNABS

Floor plan measurements, dimensions, square footage, existing structures & features are approximations and for illustrative purposes only. We make no guarantee, warranty, representation, expressed or implied, as to the accuracy and completeness of this rendering. Independent verification is recommended. E&O Insured for \$1,000,000

www.OPTIMUMFLOORPLANS.com 2D & 3D Floor Plans 604-729-5033

OPTIMUM
FLOOR PLAN DESIGNS