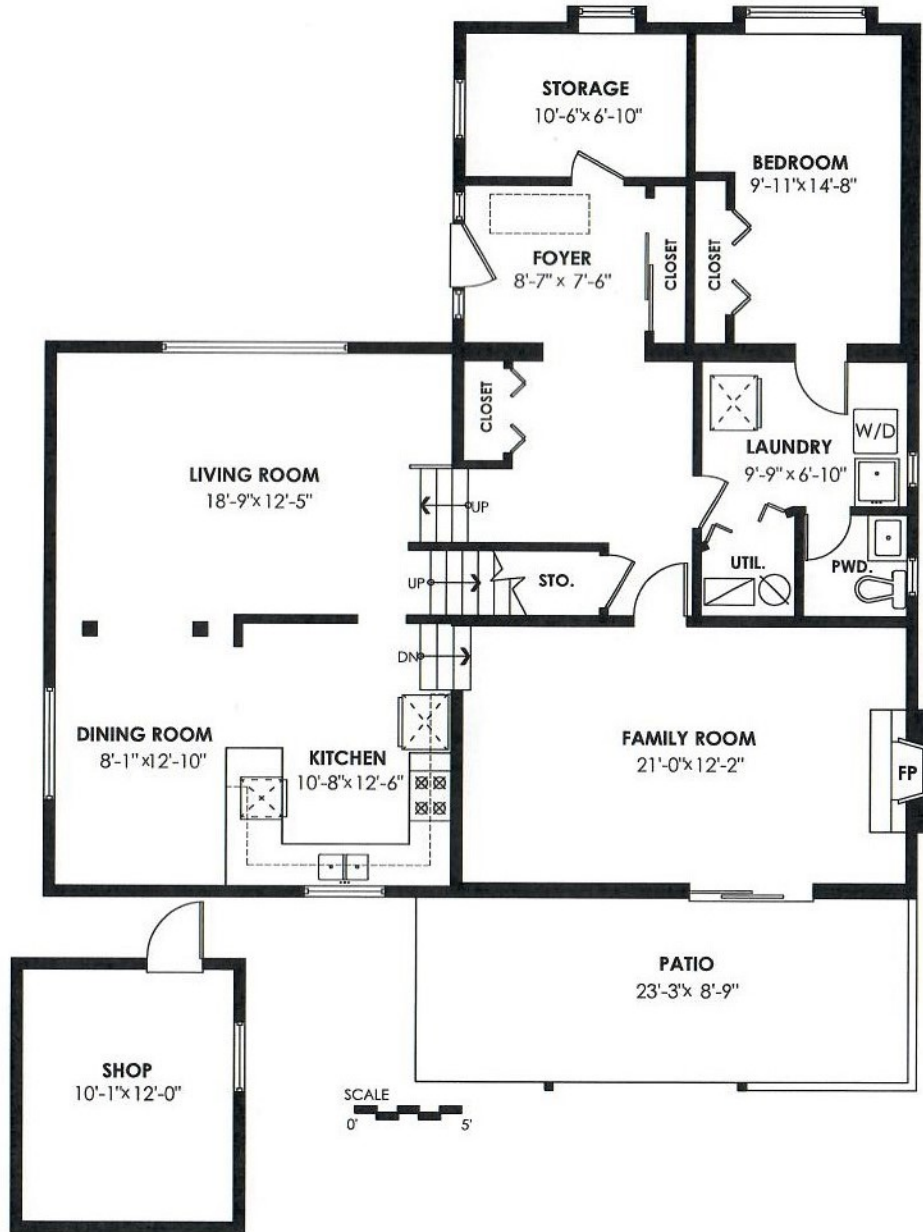


21239 94B Avenue, Langley

Main Floor Plan

Floor Area: 1417 sq.ft.
Ceiling Height: 8'-1"



Main Floor: 1,417 sq. ft.
Upper Floor: 691 sq. ft.
Total Livable: 2,108 sq. ft.

Shop: 143 sq. ft.
Patio: 210 sq. ft.
Total Extras: 353 sq. ft.

Upper Floor Plan

Floor Area: 691 sq.ft.
Ceiling Height: 8'

