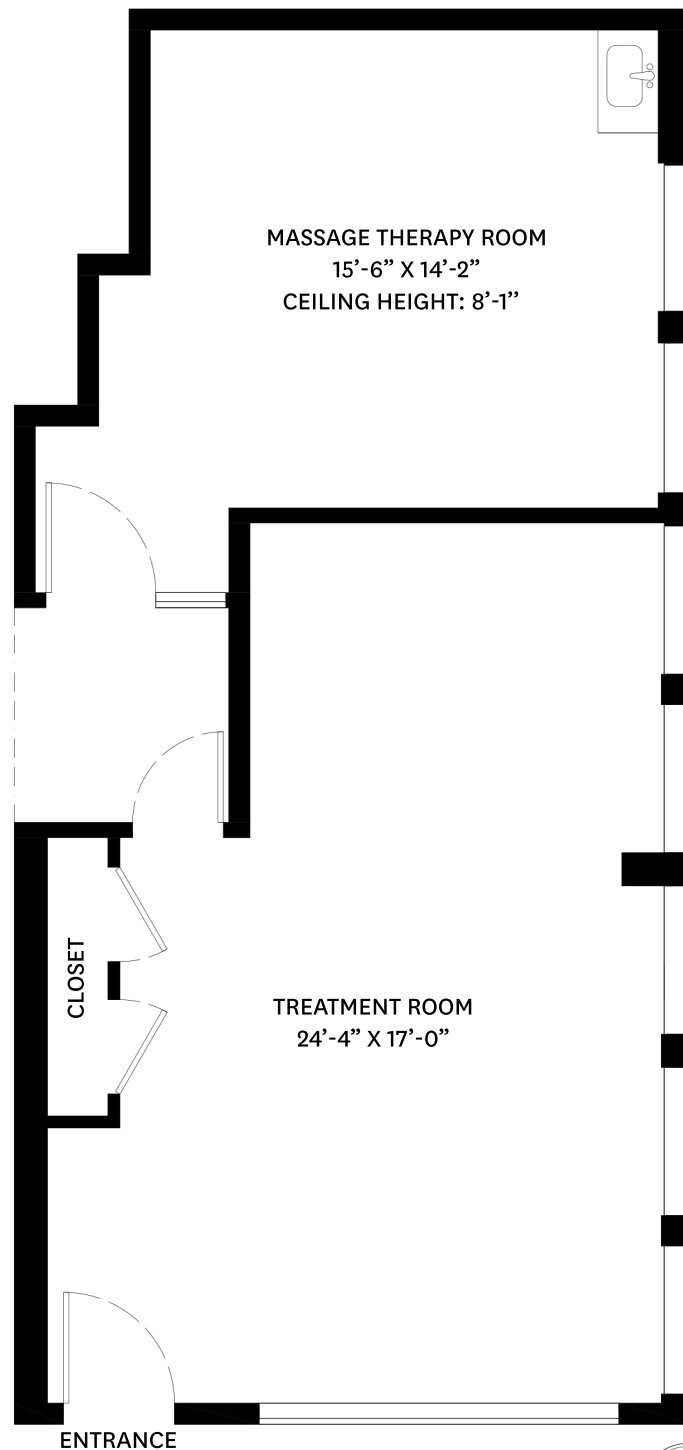


110-856 HOMER STREET, VANCOUVER, BC

MAIN FLOOR TOTAL: 700 SQ.FT.



MAIN FLOOR PLAN
Ceiling Height: 8'-10"



Duke Grimbeek PREC*
604-468-0010
Duke@theMACNABS.com

floor plan designed by
ishot.ca Enterprises Inc.
604-368-7979
<http://ishot.ca>

*PERSONAL REAL ESTATE CORPORATION. THE FLOOR PLAN ILLUSTRATION IS NOT SUITABLE FOR CONSTRUCTION/ ARCHITECTURAL PURPOSES. MEASUREMENTS ARE APPROXIMATE AND MAY NOT BE TO SCALE. E&O INSURED.