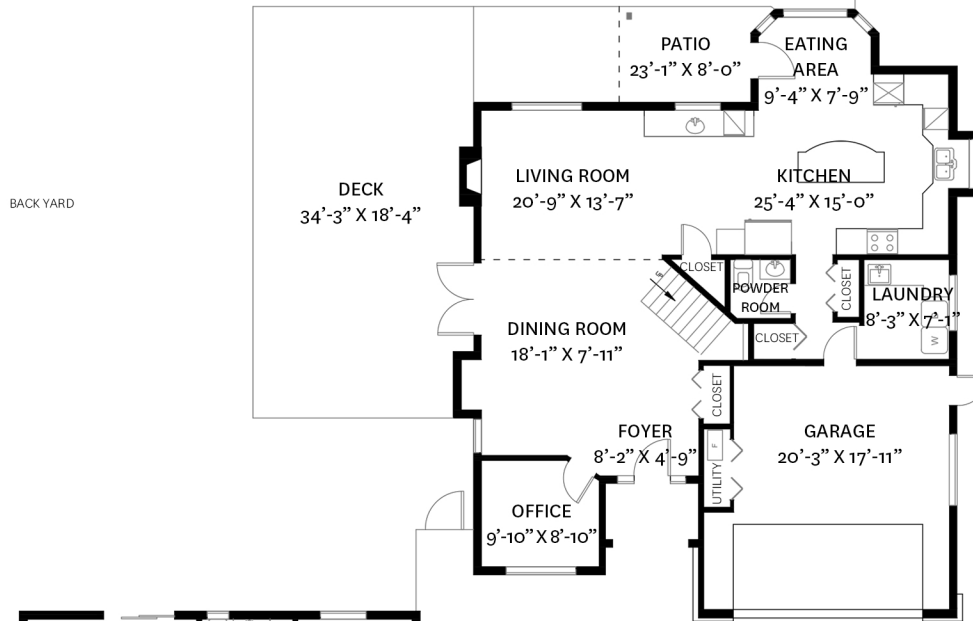
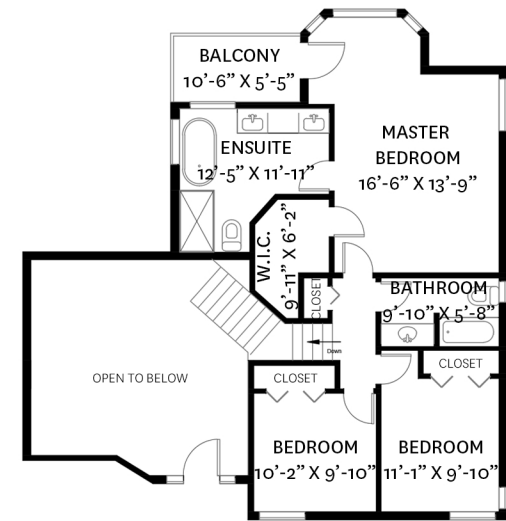


# 20756 RIVER ROAD, MAPLE RIDGE, BC



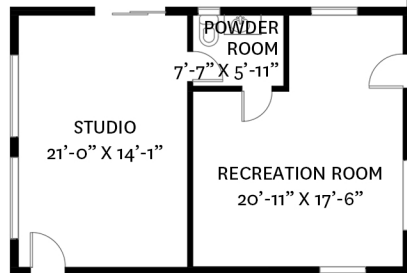
## MAIN FLOOR PLAN

Ceiling Height: 8'-0"  
 Ceiling Height: 16'-11" (Dining Room)



## UPPER FLOOR PLAN

Ceiling Height: 8'-0"



## STUDIO/REC. ROOM FLOOR PLAN

Ceiling Height: 11'-4" (Studio)  
 Ceiling Height: 8'-5" (Rec. Room)

**MAIN FLOOR TOTAL:** 1,276 SQ. FT.  
**UPPER FLOOR TOTAL:** 889 SQ. FT.  
**TOTAL:** 2,165 SQ. FT.

**STUDIO/REC. ROOM TOTAL:** 743 SQ. FT.  
**DECK:** 619 SQ. FT.  
**PATIO:** 187 SQ. FT.  
**GARAGE:** 415 SQ. FT.  
**BALCONY:** 58 SQ. FT.



**Jordan Macnab** PREC\*  
 604-551-5695  
 jordan@themacnabs.com

floor plan designed by  
 ishot.ca Enterprises Inc.  
 604-368-7979  
 http://ishot.ca

\*PERSONAL REAL ESTATE CORPORATION. THE FLOOR PLAN ILLUSTRATION IS NOT SUITABLE FOR CONSTRUCTION/ ARCHITECTURAL PURPOSES. MEASUREMENTS ARE APPROXIMATE AND MAY NOT BE TO SCALE. E&O INSURED.